

Werris Creek Coal Mine Community Consultative Committee

Seventh Meeting of the Committee

Tony Caine Room, Quirindi RSL Club

10.00am 21st February 2008

MINUTES

1. Record of Attendance Ron Short (Chairman); Tony Ryan (Community Representative) ; Noel Taylor (Community Representative); Jill Coleman (Community Representative) ; Lindsay Bridge (Community Representative) ; Casper Dieben (General Manager WCC); Danny Young (Environmental Manager Whitehaven Group); Lynden Cini (Environmental Officer WCC) Lee McDonagh (WCC).

Apologies Des George, (Manager Mining Engineering/MME); Bob Stewart, (Director Environmental & Community Services, LPSC); Chris Holley (Community Representative)

2. Minutes of Previous Meeting

Minutes of the previous meeting 13th December 2007 Motion moved to accept minutes . Moved Noel Taylor, Seconded Lindsay Bridge.

3. Matters Arising

- Jason Reynolds (new CCC member) has moved to Queensland. All correspondence and a letter from Ron Short has been forwarded to his current address but nobody has received any instruction from him as to if he wishes to remain on the committee. Letter to be forwarded to Department of Planning notifying them of Mr Reynolds absence.
- Ron Short is aware that in light of Mr Reynolds absence the CCC may need to advertise for new members.
- Casper Dieben reported that WCC trucks do have tarps and trucks are now fitted with electronic tarps.

4. Declaration of Pecuniary or other interests

Tony Ryan stated that he and his family are currently involved in negotiations with Whitehaven for the acquisition of "Railway View" and that the property is currently under contract.

5. New Matters for discussion under General Business

- Revised Mine Plan
 - Casper Dieben explained that mine consultant has to develop new mine plan by end of March/early April;
- Underground Workings
 - Company is attempting to establish the exact location of UG workings;
 - A decision has not been made if Whitehaven will mine through UG workings;
 - UG workings are in the mine lease, the current DA consent requires that mining is kept 50m away from the UG workings. In order to mine workings an application to modify DA consent would need to be done.

- Drilling
 - Will be carried out to determine coal resources.
- Exploration
 - Jill Coleman asked in relation to exploration did the company know that coal extended up past Windsor's property. Danny Young replied that there is an assumption that there would be coal but it is an expensive and extensive exercise to determine if economic resource exists. It is for this reason that initial mining and mine planning concentrated on the known reserves from initial exploration work. Any future plans for extension of mining activity would be reliant on additional exploration results and development application procedures; and
 - Ron Short stated that community interest in existence of underground workings was not high and that the community generally was favorable to the development proposal.

Ron Short asked that if WCC sees benefit of expansion and in mining the underground workings could the company gather information on history of Underground Mine and produce a document recording the history of mining in the UG workings. WCC agreed to do this.

6. Acceptance of New Guidelines for Establishing and Operating CCC's for Mining Projects –June 2007

Motion moved to accept New Guidelines for Establishing and Operating CCC's for Mining Projects – June 2007 tabled previous meeting.

Moved Jill Coleman, seconded Tony Ryan.

7. Werris Creek Coal Pty Ltd (WCC) – Management and Operations update

Danny Young tabled document listing Werris Creek Coal site contacts explaining that if anyone has any issues to contact any of the people on the list.

8. WCC Draft Action Plan in response to Department of Planning's correspondence dated 20 December 2007 to the 2006/2007 AEMR

Danny Young explained each issue as per the Draft Action Plan. In addition the following comments/discussion took place:

Noise:

- Spectrum Acoustics would be on site last week of February to commence Sound Power Level Readings on Dozers on stockpile as well as on Marshalls operational plant;
- Casper Dieben explained some of the sound attenuation methods that can be put on machinery, particularly dozers as per the actions undertaken at Whitehaven's Gunnedah Coal Handling and Processing Plant;
- Ron Short asked if noise decreasing measures extended to the training of the dozer and other plant operators. Casper Dieben responded that through this is achieved through toolbox talks as well as having expert advice issued via our noise consultants, Spectrum Acoustics;
- It is likely that project related properties will have monitoring removed upon amendment to the noise monitoring program and approval by relevant authorities;
- Company expects noise monitoring results to significantly improve;
- Ron Short asked if houses will be tenanted, company responded that may be likely;
- Lindsay Bridge asked if WCC are not using monitoring points would company lose it ability to assess noise. Danny Young responded that company will look at new monitoring

program and assess if new monitoring points will be established in lieu of those properties removed from monitoring as a result of purchase;

Blasting:

- Blasting Monitoring program will be reviewed on acquisition of properties currently nominated as blast monitoring points;
- WCC will ensure closer monitoring of meteorological conditions prior to a blast, and improve liaison with the blasting contractor, Orica, as well as with MME;
- Lindsay Bridge commented that 116.0 dBL is quite a high noise level, Danny Young responded that DECC and Orica have been liaising in an effort to improve blast technique and outcome, and this is supported through the more recent blast results. The occurrence of blasts within the 115 -120 dB(L) range should not necessarily be considered an exceedance with the consent allowing for 5% of blasts within this range over a 12 month period;
- Ron Short explained the blasting criteria that WCC must comply within, Casper Dieben added that blasting is very complex, and Ron Short added that Roche Blasting Services did present blasting information at an earlier CCC meeting;

Groundwater:

- Groundwater – Danny Young stated that company was awaiting final determination of placement of piezometer's from Geoterra Pty Ltd, and that the company will commission a different hydrologist to install the piezometers so WCC can continue to use Geoterra to provide independent advice on groundwater issues to the satisfaction of authorities and for use in the provision of information in annual reporting.

General:

- Jill Coleman asked if the letter received from Department of Planning was taken as a serious letter of criticism of the company. Danny Young responded that it was a serious cause for concern, which is why he has responded with a positive action plan in an effort to improve performance at the Werris Creek Site and ensure compliance with relevant consent criteria.

Ron Short called for views on the Draft Action Plan from the CCC. The members of the CCC indicated they were satisfied with the proposals put forward in the Action Plan.

Danny Young called for suggestions/actions from CCC members on the basis that this was there opportunity to have input into the proposed actions. The members all agreed that the Action Plan be presented to Department of Planning in its current form.

9. Discussion Quarterly Monitoring Results July, August, September 2007

Tony Ryan commented that members were a lot happier with current presentation of results compared to the old way of receiving all the bulk data. Ron Short agreed that the format was much better.

Lindsay Bridge inquired about the surface water monitoring data and its purpose.

Danny Young responded that WCC are accumulating a bank of data for long term comparison of water quality over time to detect any changes for further investigation. Such data is also useful to mine site staff to assess water quality particularly in terms of Total Suspended Solids levels,

Electrical Conductivity, pH and Oil and Grease so the site can be prepared to undertake ameliorative measures should monitoring results indicate an exceedance of criteria would be likely in the event of any discharge. Lynden Cini added that water sampling results can be compared with ANZECC guidelines.

10. Discussion Quarterly Monitoring Results October, November, December 2007

As above

11. General Business

- Lindsay Bridge commented that the Dump Height has increased. Casper Dieben explained that the level at the top of the dump at this point in time has been maintained.

NOTE: AGENDA ITEM : WCC to present information on waste height at next meeting.

- Noel Taylor commented when on a site visit after last meeting he observed that there did not appear to be any backfilling progress made. Casper Dieben explained that backfilling is now occurring. He also commented on how soil expands after excavation takes place, resulting in a greater volume of material to be replaced and the requirement for shaped waste emplacements as specified in the final rehabilitation plans. He also explained that the open cut mining process requires an open void arrangement but that the final void at the end of mine life is reduced as much as possible by reshaping and fill. The final void design will also be in accordance with approved plans.

NOTE: AGENDA ITEM : WCC to provide copies of Conceptual Design Plan for Final Rehabilitation.

Meeting Closed 11.45am.

12. Next Meeting

Meeting date to be discussed between Ron Short and Lynden Cini. All agreed that Thursday was the best day to hold the meetings.

Copy to:

Ron Short	Chairman
Tony Ryan	Local Community Representative
Chris Holley	Local Community Representative
Jill Coleman	Local Community Representative
Noel Taylor	Local Community Representative
Lindsay Bridge	Local Community Representative

Colin Phillips	DoP
Monique Meyer	DPI
Bob Stewart	LPSC

Des George	MME
Les Latcham	MME

Casper Dieben	WCC
Gordon Atkinson	WCC
Chris Burgess	Whitehaven Coal



WERRIS CREEK COAL PTY LTD

ENVIRONMENTAL MONITORING

3rd QUARTERLY REPORT

October, November, December 2007

This report covering the period 1st October 2007 to 31st December 2007 is the third quarterly Environmental Monitoring Report for the 2007/8 Annual Environmental Management Report (AEMR) reporting period (1 April 2007 to 31 March 2008).

The report includes environmental monitoring results for the on-site Weather Station, Air Quality, Noise (operational and blasting), Surface and Ground Water together with complaints received and general detail covering site environmental matters.

Note: Monitoring results with any non compliance of monitoring criteria are highlighted in **yellow**.

15 January 2008

CONTENTS

1.0	WEATHER STATION	3
2.0	AIR QUALITY	3
2.1	HVAS (PM10) Monitoring	3
2.1.1	Monitoring Data Results	3
2.1.2	Discussion - Compliance / Non Compliance	4
2.2	DEPOSITED DUST	4
2.2.1	Monitoring Data Results	4
3.0	NOISE	4
3.1	OPERATIONAL NOISE	4
3.1.1	Monitoring Data Results	4
3.1.2	Discussion - Compliance / Non Compliance	5
3.1.3	Action Taken.....	5
3.2	NOISE COMPLAINTS	5
4.0	BLAST.....	5
4.1	BLAST MONITORING	5
4.1.1	Monitoring Data Results	5
4.1.2	Discussion - Compliance / Non Compliance	5
4.1.3	Action Taken.....	5
4.2	BLAST COMPLAINTS	6
5.0	WATER.....	6
4.1	GROUND WATER	6
4.1.1	Monitoring Data Results	6
4.1.2	Discussion - Compliance / Non Compliance	6
4.2	SURFACE WATER	6
4.2.1	Monitoring Data Results	6
4.2.2	Discussion - Compliance / Non Compliance	6
6.0	COMPLAINTS SUMMARY.....	6
7.0	GENERAL.....	6

Appendices

Appendix 1Deposited Dust Monitoring Results
Appendix 2Noise Monitoring Results
Appendix 3Blast Monitoring Results
Appendix 4Ground Water Monitoring Results
Appendix 5Surface Water Monitoring Results

Figure 2

1.0 WEATHER STATION

WEATHER

Weather data was available for 100 % of October.

Weather data was available for 100 % of November.

Weather data was available for 25% of December. Data loss was due to battery malfunction and power loss to the on-site computer which has since been rectified. Weather Station computer was relocated to the WCC site office in December 2007.

2.0 AIR QUALITY

2.1 HVAS (PM10) Monitoring

High Volume Air Sample (HVAS) monitoring for particulate matter less than 10 micron in size (PM10) is conducted at four sites as shown on the attached plan, **Figure 2** and labeled as listed below.

- WCHV1 – “Old Colliery” or Marquettes
- WCHV2 – Pattersons
- WCHV3 – “Railway View” or Ryans
- WCHV4 – “Eurunderee”

In addition a fifth site WCHV5 at “Railway View” continues to sample total suspended particulate (TSP) matter to monitor the PM10/TSP relationship on a voluntary basis to assist with government departmental air quality data collection and correlation.

Sample data is scheduled for 24 hours every 6 days in accordance with DECC – EPA protocols and results are reported as micro grams per cubic metre of air sampled or ug/m3.

2.1.1 Monitoring Data Results

Data recovery from each site during the period was 100%.

Werris Creek HVAS results

Date	WCHV-1 Marquett (PM10)	WCHV-2 Patterson (PM10)	WCHV-3 Ryan 6	WCHV-4 Eurunderee (PM10)	WCHV-5 Ryan TSP	24hr criteria PM10	annual criteria PM10	TSP	PM10/TS P Ratio	PM10/TSP Ratio moving ave
2/10/2007	32	24	29	42	46	50	30	90	63%	49%
8/10/2007	24	20	19	27	42	50	30	90	45%	44%
14/10/2007	13	12	9	14	32	50	30	90	28%	44%
20/10/2007	23	24	27	47	45	50	30	90	60%	60%
26/10/2007	14	12	9	12	16	50	30	90	56%	58%
1/11/2007	13	29	38	31	52	50	30	90	73%	63%
7/11/2007	8	5	8	12	17	50	30	90	47%	59%
13/11/2007	8	5	8	12	17	50	30	90	47%	57%
19/11/2007	52	16	1	20	68	50	30	90	1%	47%
25/11/2007	7	7	6	10	11	50	30	90	55%	48%
1/12/2007	9	11	10	9	12	50	30	90	83%	53%
7/12/2007	23	17	20	24	27	50	30	90	74%	55%
13/12/2007	26	16	17	22	20	50	30	90	85%	58%
19/12/2007	16	15	18	21	29	50	30	90	62%	59%
25/12/2007	17	18	18	18	30	50	30	90	60%	59%
31/12/2007	18	24	20	19	29	50	30	90	69%	59%

2.1.2 Discussion - Compliance / Non Compliance

During November 2007 one PM 10 site (Marquette) exceeded the short term 24-hour impact criteria of $50\mu\text{g}/\text{m}^3$ on one run day (19th November 2007).

All other individual PM10 24 hour average results, at all sites, were equal to or below the short term 24 hour impact criteria of $50\mu\text{g}/\text{m}^3$.

All PM10 sites are below the long term impact and land acquisition annual impact criteria of $30\mu\text{g}/\text{m}^3$.

The TSP site is below the long term impact and land acquisition annual impact criteria of $90\mu\text{g}/\text{m}^3$.

2.2 DEPOSITED DUST

Limits were removed from Environment Protection Licence 12290 pertaining to mean annual dust deposition, however, in accordance with commitments within the approved Air Quality Monitoring Programme, monthly routine air quality monitoring for Werris Creek Coal continues to be undertaken for deposited dust.

2.2.1 Monitoring Data Results

See Appendix 1. Please note that December results are not included due to delays in receiving results.

2.3 AIR QUALITY COMPLAINTS

No Complaints Received .

3.0 NOISE

Noise Monitoring is conducted by Spectrum Acoustics at the following locations:

R2: Zeolite, R3: Cinta, R4: Old Colliery, R5: Mountain View, R6: Hillview (mine owned residence) R7: Railway View, R8: Hazeldene, and R10: Escott. Three sets of measurements are made over the "circuit", one during the day time period, (before 6pm), one during the evening period (from 6pm – 10pm) and one at night (after 10pm).

The noise emission criterion for WCC is 35dB(A) at all times unless otherwise subject to a current, legally binding agreement between WCC and the occupant of the affected residential property. Hillview is a mine owned residence and as such monitoring results above 35dB(A) are not recorded as non-compliances

3.1 OPERATIONAL NOISE

3.1.1 Monitoring Data Results

See Appendix 2.

3.1.2 Discussion - Compliance / Non Compliance

October 2007 noise monitoring results indicated exceedances at Railway View during each monitoring period, the criterion was also exceeded at Old Colliery during the day and evening and at Cintra during the day (dozer working on coal stockpile). Contributing factors to noise exceedance was engine noise from haul trucks in pit and on dumps and shovel working in pit. At Zeolite the 37dB(A) recorded during the night is within the additional 5dB(A) agreed limit of 40dB(A) .

November 2007 noise monitoring results only showed exceedances of agreed operational noise limits of 40dB(A) at Zeolite during the day and night survey. Noise was due to dozer working on coal stockpile near rail loader and from trucks arriving and departing the stockpile. Night exceedances was due to noise from dozer and a loader working on coal stockpile near rail loader and also from the train and train loading.

December 2007 noise monitoring results showed exceedances at Railway View during day and night monitoring periods, and at Old Colliery and Cintra during the day. Haul truck and shovel noise as well as noise from two blast hole rigs operating in front of the high wall was recorded. At Cintra the daytime exceedance was due to noise from the dozer working on coal stockpile near the rail loader and from trucks arriving and departing stockpile area. Evening and night time exceedances at Railway View were due to general noise emissions from the mine.

3.1.3 Action Taken

The ongoing issue of non-compliance with noise limits as raised by Department of Planning and DECC – EPA is currently subject to negotiations between WCC and affected landowners in an attempt to seek resolution as soon as possible.

3.2 NOISE COMPLAINTS

Nil Complaints were received regarding Noise.

4.0 BLAST

During this reporting period a total of 24 blasts numbered ORICA 34 to ORICA 58 were fired.

4.1 BLAST MONITORING

4.1.1 Monitoring Data Results

See Appendix 3.

4.1.2 Discussion - Compliance / Non Compliance

Shot 34 on 3/10/2007 resulted in higher Peak Overpressure (dBL) readings of 115.6 (Railway View) and 116.2 (Old Colliery). This is not a non compliance issue as up to 5% of blasts for the AEMR period are permitted within the 115 to 120dBL range. All blasts complied with the 120dBL limit.

4.1.3 Action Taken

No Actions necessary.

4.2 BLAST COMPLAINTS

Nil Complaints were received regarding Blasting.

5.0 WATER

Groundwater monitoring was undertaken in November 2007 due to Ecowise equipment failure in October 2007.

Surface water monitoring was undertaken in October 2007 by Ecowise Environmental. WCC Management requested Ecowise undertake a full analysis sweep of all surface water structures, - storage dams, sediment basins and farm dams to provide WCC with a complete set of results in addition to those required by DECC.

4.1 GROUND WATER

4.1.1 Monitoring Data Results

See Appendix 4.

4.1.2 Discussion - Compliance / Non Compliance

No recorded exceedances.

4.2 SURFACE WATER

4.2.1 Monitoring Data Results

See Appendix 5.

4.2.2 Discussion - Compliance / Non Compliance

No Surfacewater discharges during this period.

6.0 COMPLAINTS SUMMARY

Nil Complaints were received during this period.

7.0 GENERAL

Werris Creek Coal Pty Ltd became 100% ownership by Whitehaven Coal 1st December 2007.

6th Community Consultative Committee meeting was held 13th December 2007.

Letter dated 20 December 2007 received from Department of Planning in response to the 2006/2007 AEMR.

DEPOSITED DUST

APPENDIX 1
Results
October 07 - December 07

Date		Site																	
In	Out	WC-1 ("Escott")			WC-2 ("Cintra")			WC-3 ("The Colliery")			WC-4 ("Hillview")			WC-5 ("Railway View")			WC-6 (Southern Boundary)		
		Insoluble Matter g/m ² /month	Ash g/m ² /month	Ash Content %	Insoluble Matter g/m ² /month	Ash g/m ² /month	Ash Content %	Insoluble Matter g/m ² /month	Ash g/m ² /month	Ash Content %	Insoluble Matter g/m ² /month	Ash g/m ² /month	Ash Content %	Insoluble Matter g/m ² /month	Ash g/m ² /month	Ash Content %	Insoluble Matter g/m ² /month	Ash g/m ² /month	Ash Content %
5/10/07	5/11/07	1.3	0.8	62	3.4	1.8	53	5.5	1.1	20	2	1	50	1.5	0.9	60	3.8	2.7	71
5/11/07	3/12/07	1	0.5	50	1.2	0.6	50	4.8	1.6	33	0.7	0.4	57	0.7	0.4	57	5.9	4.6	78

NOISE MONITORING

DATE	TIME	RECEPTOR													
		R2	R3	R4	WCC	R5	WCC	R6	WCC	R7	WCC	R8	WCC	R10	WCC
		Zealite	Cintra	Old Colliery	WCC	Mountain View	WCC	Hillview	WCC	Railway View	WCC	Hazeldene	WCC	Escott	WCC
30-Oct-07	3:20pm	38	46	41	34	39	34	50	40	47	47	43	<30	43	AUDIBLE NOT MEASURABLE
30-Oct-07	7:30pm	43	33	42	39	32	AUDIBLE NOT MEASURABLE	62	49	47	46	33	MEASURABLE	33	26
30-Oct-07	10:08PM	40	31	39	35	33	30	44	38	42	42	37	35	34	30
27-Nov-07	3:10pm	45	40	43	35	51	wcc inaudible	44	35	43	wcc audible not measurable	48	wcc not audible	44	wcc audible not measurable
27-Nov-07	7:05pm	42	33	51	wcc Audible not measurable	38	wcc not audible	44	35	42	wcc barely audible	40	wcc not audible	41	wcc barely audible
28-Nov-07	10:30pm	43	42	36	33	30	33	45	27	36	35	32	<25	31	30
10-Dec-07	3:10pm	41	44	42	38	37	25	50	41	45	42	43	wcc not audible	48	<30
10-Dec-07	7:35pm	37	39	44	wcc Audible not measurable	40	wcc not audible	45	43	45	wcc barely audible	33	wcc not audible	45	32
10-Dec-07	10:10pm	38	37	41	33	33	wcc barely audible	42	35	46	45	35	wcc not audible	47	30

SHOT NO	DATE	MONITOR LOCATION	PEAK GROUND PRESSURE mm/s	PEAK OVER PRESSURE dBL	TIME
ORICA 34	3/10/2007	Glenala	0.08	109.9	1324
		Railway View	1.01	115.6	1324
		Old Colliery	1.18	116.2	1324
		Escott Road	0.51	105	1324
ORICA 35	5/10/2007	Glenala	D.N.T		1312
		Railway View	D.N.T		1312
		Old Colliery	D.N.T		1312
		Escott Road	0.38	95.8	1312
ORICA 36	10/10/2007	Glenala	D.N.T		1320
		Railway View	1.71	106.7	1320
		Old Colliery	1.23	114.4	1320
		Escott Road	D.N.T		1320
ORICA 37	11/10/2007	Glenala	D.N.T		1314
		Railway View	1.21	101.1	1314
		Old Colliery	0.75	98.1	1314
		Escott Road	D.N.T		1314
ORICA 38	17/10/2007	Glenala	D.N.T		1310
		Railway View	0.93	110.9	1310
		Old Colliery	1.88	110.5	1310
		Escott Road	D.N.T		1310
ORICA 39	19/10/2007	Glenala	D.N.T		1327
		Railway View	0.78	104.9	1327
		Old Colliery	0.55	86.8	1327
		Escott Road	D.N.T		1327
ORICA 40	26/10/2007	Glenala	D.N.T		1313
		Railway View	2.52	108.1	1313
		Old Colliery	1.05	1.05	1313
		Escott Road	D.N.T		1313
ORICA 41	1/11/2007	Glenala	D.N.T		1312
		Railway View	3.47	108.1	1312
		Old Colliery	2.05	83.3	1312
		Escott Road	0.46	94.6	1312
ORICA 42	6/11/2007	Glenala	D.N.T		1321
		Railway View	0.53	102.3	1321
		Old Colliery	0.43	100.2	1321
		Escott Road	0.08	109.8	1321
ORICA 43	9/11/2007	Glenala	D.N.T		1316
		Railway View	2.62	112.6	1316
		Old Colliery	2.05	106.2	1316
		Escott Road	0.87	101.8	1316
ORICA 44	13/11/2007	Glenala	D.N.T		1306
		Railway View	0.98	108.9	1306
		Old Colliery	0.7	83.3	1306
		Escott Road	D.N.T		1306
ORICA 45	16/11/2007	Glenala	D.N.T		1313
		Railway View	3.8	109.2	1313
		Old Colliery	1.9	102.9	1313
		Escott Road	0.33	103.7	13
ORICA 46	15/11/2007	Glenala	d.N.T		1316
		Railway View	0.5	105.2	1316
		Old Colliery	0.53	83.3	1316
		Escott Road	D.N.T		1316

SHOT NO	DATE	MONITOR LOCATION	PEAK GROUND PRESSURE mm/s	PEAK OVER PRESSURE dBL	TIME
ORICA 47	21/11/2007	Glenala	D.N.T		1312
		Railway View	2.87	106.7	1312
		Old Colliery	1.95	108.4	1312
		Escott Road	0.92	93.3	1312
ORICA 48	23/11/2007	Glenala	D.N.T		1325
		Railway View	0.33	109.7	1325
		Old Colliery	0.08	114.7	1325
		Escott Road	D.N.T		1325
ORICA 49	28/11/2007	Glenala	D.N.T		1308
		Railway View	1.36	110.9	1308
		Old Colliery	1.28	111.8	1308
		Escott Road	0.41	95.8	1308
ORICA 50	28/11/2007	Glenala	D.N.T		1308
		Railway View	1.36	110.9	1308
		Old Colliery	1.28	111.8	1308
		Escott Road	0.41	95.8	1308
ORICA 51	30/11/2007	Glenala	D.N.T		1312
		Railway View	0.48	104.6	1312
		Old Colliery	0.35	108.4	1312
		Escott Road	D.N.T		1312
ORICA 52	30/11/2007	Glenala	D.N.T		1312
		Railway View	0.48	104.6	1312
		Old Colliery	0.35	108.4	1312
		Escott Road	D.N.T		1312
ORICA 53	6/12/2007	Glenala	D.N.T		1308
		Railway View	0.78	107.5	1308
		Old Colliery	0.8	107.7	1308
		Escott Road	0.48	99.3	1308
ORICA 54	12/12/2007	Glenala	D.N.T		1312
		Railway View	2.54	109.4	1312
		Old Colliery	1.83	114.1	1312
		Escott Road	0.59	106.4	1312
ORICA 55	13/12/2007	Glenala	D.N.T		1309
		Railway View	0.83	110.5	1309
		Old Colliery	1.65	106.8	1309
		Escott Road	0.59	102.3	1309
ORICA 56	14/12/2007	Glenala	D.N.T		1308
		Railway View	1.11	114.7	1308
		Old Colliery	1.73	83.3	1308
		Escott Road	D.N.T		1308
ORICA 57	18/12/2007	Glenala	D.N.T		1319
		Railway View	1.18	105.4	1319
		Old Colliery	1.55	108.2	1319
		Escott Road	0.26	95.8	1319
ORICA 58	19/12/2007	Glenala	D.N.T		1309
		Railway View	0.73	110.3	1309
		Old Colliery	1.43	102.4	1309
		Escott Road	0.69	102.8	1309

Sample Num	Sample Location	Sample Date	Sampler	Alkalinity - Total as CaCO ₃ mg/L	Arsenic - filterable mg/L	Arsenic mg/L	Cadmium - filterable mg/L	Cadmium mg/L	Calcium - filterable mg/L	Calcium - total mg/L	Chloride mg/L	Chromium - filterable mg/L	Chromium - hexavalent mg/L	Chromium - total mg/L	Chromium mg/L	Copper - filterable mg/L	Depth to Ground - metres	Depth to Standpipe - metres	Electrical Conductivity uS/cm	Electrical Conductivity uS/cm - field	Full Metal Scan - filtered	Lead - filterable mg/L
28531.01	MW1 - Hillview	13-Nov-07	A Papalika EEL	455	<0.001		<0.000005		98		71	<0.001	<0.005			0.0043	51.0	51.26				0.00037
28531.02	MW2 - Railway View	13-Nov-07	A Papalika EEL	370	0.021		0.00091		182		587	0.029	<0.005			0.0033	27.21	27.35		970		<0.000005
28531.03	MW3 - Eurunderee	13-Nov-07	A Papalika EEL	395	0.002		0.00008		42		60	0.007	<0.005				14.73	15.12		2330		<0.000005
28531.04	MW4 - Piezo 1	13-Nov-07	A Papalika EEL	415	<0.001												8.52	9.22				<0.000005
28531.05	MW4B	13-Nov-07	A Papalika EEL	730	0.002												9.39	10.02		810		<0.000005
28531.06	MW5	13-Nov-07	A Papalika EEL	162	<0.001		<0.000005		238		617	0.001	<0.005			0.0006	8.47	9.59		2620		<0.000005
28531.07	MW6	13-Nov-07	A Papalika EEL	390	0.002		<0.000005		85		241	0.001	<0.005			<0.0005	11.11	12.14		1930		<0.000005
28531.08	MW7 - Rosehill	13-Nov-07	A Papalika EEL	535	<0.001				52		64	<0.001	<0.005			<0.0005	4.36	4.48		520		<0.000005
28531.09	MW8 - Roseneath	13-Nov-07	A Papalika EEL	380	0.001		0.00005		126		195	0.007	<0.005			0.0011	15.92	16.43		1300		0.00013
28531.1	MW9 - Rail Siding	13-Nov-07	A Papalika EEL	455	<0.001		<0.000005		114		60	<0.001	<0.005			<0.0005	13.76	14.84		1070		<0.000005
28531.11	MW10 - Turnbulls	13-Nov-07	A Papalika EEL	380	0.001		<0.000005		95		362	<0.001	<0.005			0.0013	17.83	18.08		1890		<0.000005
28531.12	MW11 - Turnbull's Gap Bore	13-Nov-07	A Papalika EEL	455	0.002		<0.000005		55		156	<0.001	<0.005			0.014				1290		0.00075
28531.13	MW12 - Hazeldene	13-Nov-07	A Papalika EEL	350	0.001		<0.000005		61		131	0.002	<0.005			0.001	7.64	8.14		910		<0.000005
28531.14	MW13 - Parkhill	13-Nov-07	A Papalika EEL	220	0.001		<0.000005		47		117	<0.001	<0.005			0.0007	5.35	5.84		750		<0.000005
28531.15	MW14	13-Nov-07	A Papalika EEL	490	0.001		<0.000005		60		50	0.004	<0.005			0.0006	15.87	16.79		1050		<0.000005

Lead - filterable mg/L	Magnesium - filterable mg/L	Magnesium - total mg/L	Manganese - filterable mg/L	Manganese - filterable mg/L	Mercury - filterable mg/L	Mercury mg/L	Nickel - filterable mg/L	Nitrates mg/L	Oil & Grease mg/L	pH	pH - field	Phosphorus - reactive mg/L	Potassium - filterable mg/L	Potassium - total mg/L	Sodium - total mg/L	Sulfates - filterable mg/L	Sulfates mg/L	Time: (w)	Total Nitrogen mg/L	Total Petroleum Hydrocarbons mg/L	Total Phosphorus mg/L	Total Suspended Solids @105C mg/L	Zinc - filterable mg/L
	60		<0.001		<0.0001		0.001	5.5		7.2		0.09	0.51	54			3	1315		<2	0.4		0.12
	108		<0.001		0.0001		0.005	0.54		7.4		0.29	24	137			57	800		<2	1.5		<0.005
	29		1.1		<0.0001		0.009	0.03		7.4		<0.01	4.1	117			<2	1227		<2	0.8		<0.005
	128		0.01		<0.0001		0.004	2.2		7		<0.01	1.5	154			66	835		<2	0.32		<0.005
	92		0.005		<0.0001		0.002	4.3		7.1		0.04	0.84	246			37	1145		<2	0.05		<0.005
	23		0.003		<0.0001		<0.001	1.4		7.2		0.05	1	42			24	1000		<2	0.37		<0.005
	63		0.006		<0.0001		0.028	5.4		7		0.01	1.8	79			55	1040		<2	1.1		0.015
	58		0.001		0.0001		0.002	11		7		<0.01	1.2	71			23	1405		<2	0.03		<0.005
	124		<0.001		<0.0001		0.002	24		7.6		<0.01	0.83	108			56	1348		<2	0.01		<0.005
	67		0.001		<0.0001		0.001	13		7.4		0.02	0.62	122			31	1330		<2	0.04		0.006
	43		0.039		<0.0001		0.002	2.4		7.3		0.02	1.7	65			65	1115		<2	0.18		0.009
	36		0.001		<0.0001		0.001	2.3		6.9		0.06	1.4	47			37	1023		<2	0.09		<0.005
	66		0.067		<0.0001		0.002	20		7.1		0.01	1.9	65			12	1448		<2	0.65		<0.005

Sample No	Sample Location	Sample Date	Sampler	Alkalinity - Total as CaCO3 mg CaCO3/L	Arsenic_mg/L	Cadmium - filterable_mg/L	Cadmium_mg/L	Calcium - total mg/L	Chloride mg/L	Chromium - hexavalent_mg/L	Chromium_mg/L	Copper - filterable_mg/L	Depth to Ground metres	Depth to Standpipe - metres	Electrical Conductivity µS/cm - field	Electrical Conductivity µS/cm - lab	External Analysis - EEL (Fyshwick)	Lead - filterable_mg/L	Magnesium - total mg/L	Manganese - filterable_mg/L	Mercury_mg/L	Nickel - filterable_mg/L	Nitrates_mg N/L	Nitrites_mg N/L	NO SAMPLE: (w)	Oil & Grease mg/L
28256.01	Farm Dam 4	11-Oct-07	apalkar EEL	44	0.001	<0.00005	18	18	18	<0.0005	0.016	0.006			130	130		0.00024	2.2	0.005	<0.0001	0.002	0.03		<2	
28256.02	Farm Dam 2	11-Oct-07	Papalkar EEL	116	<0.001	<0.00005	75	75	206	<0.005	0.001	0.001			1220	1190		<0.00005	31	0.021	<0.0001	0.004	7.7		<2	
28256.03	MV Dewatering Dam	10-Oct-07	Papalkar EEL	254	0.001	<0.00005	72	72	135	<0.005	<0.001	0.006			1050	1020		<0.00005	24	0.004	<0.0001	0.005	6.6		<2	
28256.04	Farm Dam 3	11-Oct-07	Papalkar EEL	44	0.004	<0.00005	16	16	28	<0.005	0.016	0.0023			190	180		<0.00005	4.2	0.019	<0.0001	0.002	0.12		<2	
28257.01	SD3A	11-Oct-07	Papalkar EEL	94	0.002	<0.00005	15	15	7	<0.005	<0.002	0.0047			200	200		<0.00005	5.3	0.002	<0.0001	0.006	0.04		<2	
28257.02	SB3	11-Oct-07	Papalkar EEL	127	<0.001	<0.00005	20	20	67	<0.005	<0.002	0.0021			500	505		<0.00005	15	0.001	<0.0001	<0.005	1.9		<2	
28257.03	SB4	11-Oct-07	Papalkar EEL	98	0.001	<0.00005	18	18	42	<0.005	<0.002	0.0021			400	395		<0.00005	12	0.018	<0.0001	<0.005	0.08		<2	
28257.04	SB5	11-Oct-07	Papalkar EEL	84	0.002	<0.00005	36	36	50	<0.005	0.004	0.0015			450	450		<0.00005	15	0.006	<0.0001	<0.005	0.63		<2	
28257.05	SB6	11-Oct-07	Papalkar EEL	30	0.001	<0.00005	31	31	89	<0.005	<0.002	0.0016			500	460		<0.00005	15	0.15	<0.0001	<0.005	30		<2	
28257.06	SB7	11-Oct-07	Papalkar EEL	210	0.001	<0.00005	93	93	248	<0.005	<0.002	0.0019			1510	1460		<0.00005	38	0.003	<0.0001	<0.005	10		<2	
28257.07	SB8	11-Oct-07	Papalkar EEL	170	<0.001	<0.00005	118	118	237	<0.005	<0.002	0.002			1350	1300		<0.00005	33	1.2	<0.0001	<0.005	0.64		<2	
28258.01	MV1	11-Oct-07	Papalkar EEL	387	0.003	<0.00005	112	112	120	<0.005	<0.001	0.0007			520	530		<0.00005	17	0.057	<0.0001	<0.005	1.3		<2	
28258.02	SD1	11-Oct-07	Papalkar EEL	55	0.003	<0.00005	12	12	7	<0.005	0.006	0.0035			110	100		0.00075	8.9	0.19	<0.0001	0.006	0.02		<2	
28258.03	SD2	11-Oct-07	Papalkar EEL	98	0.004	<0.00005	20	20	7	<0.005	0.002	0.0024			200	200		0.0001	4.7	0.018	<0.0001	0.004	<0.01		<2	
28258.04	SD3	11-Oct-07	Papalkar EEL	133	0.001	<0.00005	22	22	11	<0.005	0.001	0.0025			260	260		0.00005	13	0.009	<0.0001	0.008	<0.01		<2	
28258.05	SD4	11-Oct-07	Papalkar EEL	109	0.002	<0.00005	20	20	7	<0.005	0.004	0.0043			210	220		<0.00005	12	0.006	<0.0001	0.004	<0.01		<2	
28258.06	SD5	11-Oct-07	Papalkar EEL	85	0.002	<0.00005	13	13	11	<0.005	0.017	0.0072			170	160		0.00021	5.4	0.007	<0.0001	0.007	0.02		<2	
28258.07	SD6	11-Oct-07	Papalkar EEL	228	0.008	<0.00005	9.8	9.8	18	<0.005	0.018	0.0068			490	500		0.0008	3.7	0.001	<0.0001	0.004	0.02		<2	
28258.08	SD7	11-Oct-07	Papalkar EEL	146	0.001	<0.00005	21	21	48	<0.005	0.001	0.0042			40	475		<0.00005	13	0.001	<0.0001	0.004	0.51		<2	
28258.09	SD8	11-Oct-07	Papalkar EEL	NO SAMPLE																						
28258.1	SD9	11-Oct-07	Papalkar EEL	54	0.002	<0.00005	17	17	18	<0.005	0.018	0.0046			170	180		0.00019	3.6	0.039	<0.0001	0.005	0.63		<2	
28258.11	SD10	11-Oct-07	Papalkar EEL	NO SAMPLE - DRY																						
28258.12	SD11	11-Oct-07	Papalkar EEL	42	<0.001	<0.00005	12	12	11	<0.005	0.011	0.0051			110	110		0.00014	2	0.008	<0.0001	0.002	1.6		<2	
28266.01	THE BORE	11-Oct-07	Papalkar EEL										56.63	57.08	2880											
28266.02	WC42	11-Oct-07	Papalkar EEL										46.13	46.21	2820											
28266.03	WC41	11-Oct-07	Papalkar EEL										53.08	53.26	1280											

pH - field	pH - lab	Phosphorus - reactive mg/L	Potassium - total mg/L	Sodium - total mg/L	Sulfates mg/L	Time: (w)	Total Nitrogen mg/L	Total Petroleum Hydrocarbons mg/L	Total Phosphorus mg/L	Total Suspended Solids @105C mg/L	Zinc - filterable mg/L	Comments
9.8	9.8	0.25	6	7.2	12	1552	1.4	<2	0.56	122	<0.005	
8.2	8	0.01	18	106	203	1817	9.6	<2	0.09	45	<0.005	
7.9	7.8	<0.01	15	94	100	847	7.8	<2	0.02	13	<0.005	
7	7.6	0.01	15	8.6	21	815	1.5	<2	0.45	37	0.006	
8.2	8.2	0.74	5.3	13	<2	1220	1.1	<2	0.8	15	<0.005	
8.4	8.5	<0.01	4.6	58	46	1305	2.6	<2	0.07	18	<0.005	
8.4	8.3	0.02	3.9	46	46	1320	0.68	<2	0.04	29	<0.005	
8.2	8.2	0.04	5.6	23	74	1335	1.9	<2	0.07	131	<0.005	
7.2	7.6	0.2	4.1	18	33	1430	34	<2	0.69	217	<0.005	
8.2	7.3	0.05	17	134	181	1445	12	<2	0.1	83	<0.005	
7.9	7.7	<0.01	33	82	206	1500	5.7	<2	0.07	132	<0.005	
8.7	8.7	<0.01	12	29	73	1510	0.67	<2	0.08	16	<0.005	
7.6	7.6	<0.01	14	92	68	830	1.3	<2	0.03	38	0.013	
8.1	8	0.36	17	2.9	20	1115	1.6	<2	0.61	11	0.005	
7.9	7.8	0.45	7.1	10	<2	1135	1.2	<2	0.57	14	0.008	
9	8.8	0.05	4.4	21	<2	1205	1.2	<2	0.17	7	<0.005	
8	8	0.49	5	18	15	910	1.4	<2	0.67	17	<0.005	
8.6	8.2	0.83	4.8	19	<2	947	2.3	<2	0.94	14	0.022	
8.7	8.5	0.62	3.8	108	12	1000	1.3	<2	0.99	217	<0.005	
8.7	8.7	0.08	4.4	69	40	1015	1.2	<2	0.21	11	<0.005	
7.6	7.8	0.07	15	17	35	1410	2.4	<2	0.15	42	0.009	
7.8	7.7	0.66	11	5.7	4	1530	2.7	<2	0.74	5	0.011	
6.4												
6.6												
6.5												

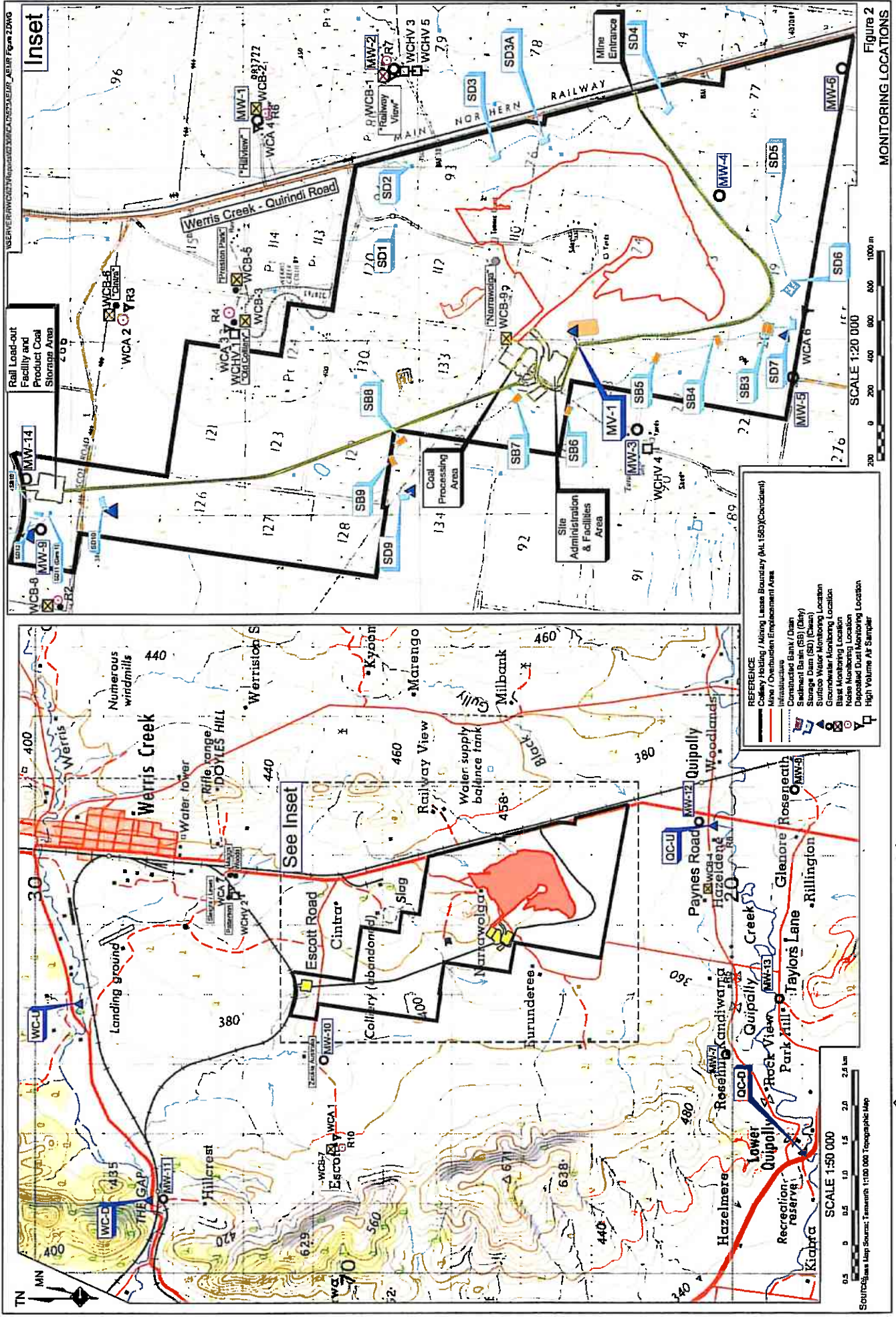


Figure 2

MONITORING LOCATIONS

- REFERENCE
- Railway Feeding / Mining Lease Boundary (At 1850)(Coincident)
 - Mine Boundary (At 1850)(Coincident)
 - Infrastructure
 - Mined Area
 - Concreted Bank / Drain
 - Sediment Basin (SB) (Dry)
 - Storage Dam (SD) (Clear)
 - Surface Water Monitoring Location
 - Groundwater Monitoring Location
 - Noise Monitoring Location
 - Noise Monitoring Location
 - Deposited Dust Monitoring Location
 - High Volume Air Sampler

Werris Creek Coal Mine Community Consultative Committee

Eighth Meeting of the Committee

Tony Caine Room, Quirindi RSL Club

10.00am 5th June 2008

MINUTES

1. Record of Attendance Ron Short (Chairman); Chris Holley (Community Representative) Jill Coleman (Community Representative); Lindsay Bridge (Community Representative); Des George (MME); Casper Dieben (General Manager WCC); Merv Pendergast (LPSC) Lynden Cini (Environmental Officer WCC) Lee McDonagh (WCC).

Apologies Tony Ryan (Community Representative); Noel Taylor (Community Representative).

Attendance Record Motion moved by Chris Holley, seconded by Lindsay Bridge.

Ron Short noted that Tony Ryan has indicated that he will be tendering his resignation shortly.

2. Minutes of Previous Meeting

Minutes of the previous meeting 24th February 2008 accepted as true representation of business conducted on day. Motion moved.

Moved Lindsay Bridge, Seconded Lynden Cini.

3. Declaration of Pecuniary or other interests

None declared.

4. New Matters for discussion under General Business

- L Bridge – Phone calls from Mr & Mrs Davies to Mr Bridge regarding noise from mine.
- L Bridge – Length of trains and times at crossings.

5. Presentation of Waste Height information by WCC

Lynden Cini presented extracts from EIS and MOP with Plan 6 Final Rehabilitation and Plan 7 Cross Sections (Yr 3) with copies to each CC representative.

General overview by Lynden Cini followed: topics centred:

- on mine void,
- waste height is as per MOP and EIS requirements with the top section yet to be backfilled with subsoil and topsoil.
- current rehabilitation working on 3,500 trees to be planted next week or so.
- tree seedling trials on southern side planted on 14th April 2008.

Merv Pendergast questioned:

- water management in final void – erosion control particularly long term,
- Safety aspect of final void

Lynden Cini explained the current contour banks, amendments made since the MOP Plans and current Site water management .

Merv Pendergast urged company to seriously think about future mine void problems and consult with water specialist consultants when planning for the future.

Ron Short stated that the presentation given by Lynden Cini satisfies committees questions.

Motion Moved by Merv Pendergast, seconded Lindsay Bridge to accept the report presented on Item 5 – Presentation of waste height information and Item 6 Copies of conceptual Design Plan for Final Rehabilitation.

7. Discussion Quarterly Monitoring Results July, August, September 2007

Lynden Cini presented brief overview of results stating 2 noise exceedances and 1 Ph exceedance after a discharge event.

With regards to previous noise problems at “Railway View”, Whitehaven has now purchased the property. Lindsay Bridge commented that Neville Davies who lives on property directly behind “Railway View” has been complaining.

Lynden Cini explained that noise attenuation measures such as idlers and sprockets etc on dozers that are currently being trailed at Whitehaven’s Gunnedah washplant have shown a reduction in noise. Casper Dieben added that Dozers are only permitted to reverse in 1st gear at WCC and that following on from one more trial at Gunnedah a decision will be made regarding fitting the same noise reduction measures on WCC dozers.

Lynden Cini has provided correspondence to DoP and DECC with regards to all measures the company has been implementing and that the Departments seem pleased with the company’s progress to date.

Ron Short raised issue of increase in road haulage tonnage as per Point 4 Department of Plannings Audit report. Ron Short explained that the real issue for community is the cumulative impact that these increases can cause and that issue is a concern.

Casper Dieben explained that with export sales return is far higher than domestic sales. WCC has been fined for exceeding the 30,000 tonne limit set in the DA consent and that WCC has planned to apply to the Department of Planning for a modification to the DA Consent to increase the domestic limit to 50,000 tonnes per year.

Merv Pendergast stated that it is a huge cost for council to repair local roads, and that company should think about damage to local roads/towns and come up with figure per tonne/km to pay for use and maintenance of local roads.

Lynden Cini explained that the submission to apply to increase the domestic load limit was part of an application that included several issues and that it had not been submitted yet.

Casper Dieben stated that the domestic sales was only a very small part of WCC operation and in some regards was a community service to local business.

Ron Short stated that coal transport on local roads was not a concern in initial mine discussion.

Motion Moved that Quarterly results be accepted. Moved by Chris Holley and seconded Lindsay Bridge.

8. General Business

- Davies – Lynden Cini update. Complaint from Neil Davies recorded, Peter Easey (Site Manager WCC) and Lynden Cini visited Mr Davies to discuss noise issues. Mr Davies was also of the opinion that WCC was blasting at night. Noise monitoring and blast monitoring was undertaken at Davies property with no exceedances recorded. After additional complaints from Mr Davies WCC has paid for a structural report on Davies property which is still pending.

Noise consultants have suggested that there could be a problem with noise exceedances under temperature inversion conditions.

Lynden Cini stated that further assessment of Davies problems will be undertaken.

- Update history on Underground workings – Des George has spoken to Bob Cameron (previous owner of “Old Colliery”) and he will be providing some information. Ron Short asked that the committee attempt to seek information on Underground workings. History on Underground workings to remain as Agenda Item for future meetings.
- Length of Trains – Issue of safety at railway crossings, not directly a WCC problem but WCC will make enquiries with Pacific National (Paul Scarf) and to report back to CCC.
- AEMR has been completed and a hard copy and CD given to CCC members to revise. Agenda Item – AEMR Discussion

Meeting Closed 11.20am.

9. Next Meeting

Meeting date to be discussed between Ron Short and Lynden Cini in three months time. All agreed that Thursday was the best day to hold the meetings.

Copy to:

Ron Short	Chairman
Tony Ryan	Local Community Representative
Chris Holley	Local Community Representative
Jill Coleman	Local Community Representative
Noel Taylor	Local Community Representative
Lindsay Bridge	Local Community Representative

Colin Phillips	DoP
Monique Meyer	DPI
Bob Stewart	LPSC

Des George	MME
Les Latcham	MME

Casper Dieben	WCC
Danny Young	WCC



WERRIS CREEK COAL PTY LTD

ENVIRONMENTAL MONITORING

4th QUARTERLY REPORT

January, February, March 2008

This report covering the period 1st January 2008 to 31st March 2008 is the fourth quarterly Environmental Monitoring Report for the 2007/8 Annual Environmental Management Report (AEMR) reporting period (1 April 2007 to 31 March 2008).

The report includes environmental monitoring results for the on-site Weather Station, Air Quality, Noise (operational and blasting), Surface and Ground Water together with complaints received and general detail covering site environmental matters.

Note: Monitoring results with any non compliance of monitoring criteria are highlighted in yellow.

15 January 2008

CONTENTS

1.0 WEATHER STATION3

2.0 AIR QUALITY3

2.1 HVAS (PM10) Monitoring..... 3

2.1.1 Monitoring Data Results..... 3

2.1.2 Discussion - Compliance / Non Compliance..... 4

2.2 DEPOSITED DUST..... 4

2.2.1 Monitoring Data Results..... 4

3.0 NOISE4

3.1 OPERATIONAL NOISE 5

3.1.1 Monitoring Data Results..... 5

3.1.2 Discussion - Compliance / Non Compliance..... 5

3.1.3 Action Taken 5

3.2 NOISE COMPLAINTS..... 5

4.0 BLAST.....5

4.1 BLAST MONITORING..... 5

4.1.1 Monitoring Data Results..... 5

4.1.2 Discussion - Compliance / Non Compliance..... 5

4.1.3 Action Taken 5

4.2 BLAST COMPLAINTS..... 6

5.0 WATER.....6

4.1 GROUND WATER..... 6

4.1.1 Monitoring Data Results..... 6

4.1.2 Discussion - Compliance / Non Compliance..... 6

4.2 SURFACE WATER..... 6

4.2.1 Monitoring Data Results..... 6

4.2.2 Discussion - Compliance / Non Compliance..... 6

6.0 COMPLAINTS SUMMARY7

7.0 GENERAL.....7

Appendices

Appendix 1 Deposited Dust Monitoring Results

Appendix 2 Noise Monitoring Results

Appendix 3 Blast Monitoring Results

Appendix 4 Ground Water Monitoring Results

Appendix 5 Surface Water Monitoring Results

Appendix 6 Department of Planning Inspection 1st February 2008

Figure 2

1.0 WEATHER STATION

WEATHER

Weather data was available for 99 % of January. (Data loss due to Faulty windspeed sensor)

Weather data was available for 90 % of February. (Data loss due to Battery Failure)

Weather data was available for 82% of March. (Data loss due to modem cable failure over Easter period when no staff on site to check station functioning)

2.0 AIR QUALITY

2.1 HVAS (PM10) Monitoring

High Volume Air Sample (HVAS) monitoring for particulate matter less than 10 micron in size (PM10) is conducted at four sites as shown on the attached plan, **Figure 2** and labeled as listed below.

WCHV1 – “Old Colliery” or Marquettes

WCHV2 – Pattersons

WCHV3 – “Railway View” or Ryans

WCHV4 – “Eurunderee”

In addition a fifth site WCHV5 at “Railway View” continues to sample total suspended particulate (TSP) matter to monitor the PM10/TSP relationship on a voluntary basis to assist with government departmental air quality data collection and correlation.

Sample data is scheduled for 24 hours every 6 days in accordance with DECC – EPA protocols and results are reported as micro grams per cubic metre of air sampled or ug/m3.

2.1.1 Monitoring Data Results

Werris Creek HVAS results

Date	WCHV-1 Marquett (PM10)	WCHV-2 Patterson (PM10)	WCHV-3 Ryan	WCHV-4 Eurunderee (PM10)	WCHV-5 Ryan TSP	Criteria			PM10/TSP Ratio	PM10/TSP Ratio moving ave
						24hr criteria PM10	annual criteria PM10	TSP		
6/01/2008	7	6	6	8	9	50	30	90	67%	30%
12/01/2008	12	14	20	23	41	50	30	90	49%	28%
18/01/2008	7	8	5	8	12	50	30	90	42%	26%
24/01/2008	17	4	0	13	10	50	30	90	0%	25%
30/01/2008	12	8	30	24	nd	50	30	90	0%	27%
5/02/2008	4	1	2	2	nd	50	30	90	0%	30%
11/02/2008	2	4	6	12	nd	50	30	90	0%	33%
17/02/2008	nd	nd	nd	nd	nd	50	30	90	0%	37%
23/02/2008	6	41	33	33	78	50	30	90	42%	42%
29/02/2008	nd	2	1	2	3	50	30	90	33%	42%
6/03/2008	27	11	25	36	31	50	30	90	81%	44%
12/03/2008	27	11	25	36	31	50	30	90	81%	35%
18/03/2008	13	7	8	32	18	50	30	90	44%	20%
24/03/2008	2	3	0	4	12	50	30	90	0%	7%
30/03/2008	nd	8	2	6	14	50	30	90	14%	14%

2.1.2 Discussion - Compliance / Non Compliance

All individual PM10 24 hour average results, at all sites, were equal to or below the short term 24 hour impact criteria of 50ug/m³.

All PM10 sites are below the long term impact and land acquisition annual impact criteria of 30ug/m³.

The TSP site is below the long term impact and land acquisition annual impact criteria of 90ug/m³.

January 2008 - all HVAS operated on all programmed run events apart from one run on 30th January 2008 at Ryan TSP site. The Ryan TSP HVAS developed a fault and had to be sent to Melbourne for service.

February 2008 – Filters not received for 17 February 2008 run event (staff oversight) and Marquette (Old Colliery) PM10 did not run on 29th February due to power failure caused by contractors disconnecting power to property.

March 2008 – All HVAS operated on all programmed run events with the exception of Marquette (Old Colliery) 30th March 2008 when power was again cut off to the property by contractors.

2.2 DEPOSITED DUST

Limits were removed from Environment Protection Licence 12290 pertaining to mean annual dust deposition, however, in accordance with commitments within the approved Air Quality Monitoring Programme, monthly routine air quality monitoring for Werris Creek Coal continues to be undertaken for deposited dust.

2.2.1 Monitoring Data Results

See Appendix 1. Please note that December results are included as they were not received in time to publish in last quarterly report.

2.3 AIR QUALITY COMPLAINTS

No Complaints Received .

3.0 NOISE

Noise Monitoring is conducted by Spectrum Acoustics at the following locations:

R2: Zeolite, R3: Cinta, R4: Old Colliery, R5: Mountain View, R6: Hillview (mine owned residence) R7: Railway View, R8: Hazeldene, and R10: Escott. Three sets of measurements are made over the "circuit", one during the day time period, (before 6pm), one during the evening period (from 6pm – 10pm) and one at night (after 10pm).

The noise emission criterion for WCC is 35dB(A) at all times unless otherwise subject to a current, legally binding agreement between WCC and the occupant of the affected residential property. Hillview and Old Colliery (Marquett) are both mine owned residences and as such monitoring results above 35dB(A) are not recorded as non-compliances.

WCC environmental licence conditions indicate that compliance with noise emission criteria is not applicable under atmospheric conditions where wind speeds are higher than 3m/s and/or there is temperature inversion of greater than +3 degreesC/100m.

3.1 OPERATIONAL NOISE

3.1.1 Monitoring Data Results

8 th and 9 th of January 2008	Railway View	4:33 pm	2.1 m/s, 100°	WCC (37), Exceedance of 2 dB
25 th and 26 th of February 2008				No Exceedances
18 th and 19 th of March 2008	Railway View	4:15 pm	2.0 m/s, 150°	WCC (37), Exceedance of 2 dB

3.1.2 Discussion - Compliance / Non Compliance

Jan 2008 noise monitoring results indicated one exceedance at Railway View during day monitoring period.

February 2008 noise monitoring results showed no exceedances.

March 2008 noise monitoring results showed one exceedance at Railway View during day.

3.1.3 Action Taken

The ongoing issue of non-compliance with noise limits as raised by Department of Planning and DECC – EPA is currently subject to negotiations between WCC and affected landowners in an attempt to seek resolution as soon as possible.

3.2 NOISE COMPLAINTS

2 Complaints were received regarding Noise during the period.

4.0 BLAST

During this reporting period a total of 27 blasts numbered ORICA 59 to ORICA 86 were fired.

4.1 BLAST MONITORING

4.1.1 Monitoring Data Results

See Appendix 3.

4.1.2 Discussion - Compliance / Non Compliance

All blasts complied with blast criterion.

4.1.3 Action Taken

No Actions necessary.

4.2 BLAST COMPLAINTS

Nil Complaints were received regarding Blasting.

5.0 WATER

Groundwater monitoring was undertaken in January 2008.

Surface water monitoring was undertaken in January 2008 by Ecowise Environmental.

In addition wet weather discharge samples were taken on the 5th and 6th February 2008.

4.1 GROUND WATER

4.1.1 Monitoring Data Results

See Appendix Groundwater Monitoring Results.

4.1.2 Discussion - Compliance / Non Compliance

No recorded exceedances.

4.2 SURFACE WATER

4.2.1 Monitoring Data Results

See Appendix Surface water monitoring Results.

4.2.2 Discussion - Compliance / Non Compliance

One Surface wet weather discharge event occurred on 5th – 6th February 2008 . Samples were sent to Ecowise Laboratory for analysis.

Total Suspended Solids limits of 50mg/L were exceeded:

- 130mg/L (Werris Creek Up),
- 80mg/L (Werris Creek Down),
- 295mg/L (Quipolly Creek Up) and
- 145mg/L (Quipolly Creek Down)

PH limit of 8.5 exceeded at EPA monitoring point 10 with a result of 9.0.

6.0 COMPLAINTS SUMMARY

2 Complaints were received during this period.

Telephone Call to complaints line	Tony Ryan	No 24 19/03/2008	Lights and noise from mine, directing straight at "Railway View"	Rang Mr Ryan 20/03/2008 2.00pm, no answer – left message. Visited Mr Ryan at Home but he was not there. Rang a second time, no response. Spoke to Tony's brother, Peter (WCC employee)	Visited Tony at property and explained undertake action, also mentioned sound monitoring occurred on night in question and results will be obtained
Telephone Call to Complaints Line	Mr Davies Property directly behind "Railway View"	No 25 27/03/2008	Noise, Dozers working on the emplacement, Blasts at night.	Peter Easey rang Mr Davies to confirm details. Peter and Lynden visited Mr Davies at his property and spoke about issues raised. Also provided Mr Davies a copy of action plan outlining expected improvements to Noise Quality.	If second complaint is received then quarterly testing may have to be done at property to substantiate exceedance claims.

7.0 GENERAL

7th Community Consultative Committee meeting was held 21st February 2008.

The Department of Planning undertook an audit of the Werris Creek Coal Mine on 1st February 2008. The audit was undertaken specifically to evaluate compliance of the mine's operations against the Development Consent (DA-172-7-2004), as amended on the 6th March 2007. The audit was undertaken by the Department of Planning's, George Hawke and Rohan Tayler, accompanied by Lindsay Fulloon of DECC. Werris Creek Coal was represented by Gordon Atkinson (Manager Engineering and Environment) and Danny Young (Environmental Manager). The audit was undertaken via a review of documentation as well as site inspection.

On the 12 March 2008, Werris Creek Coal Pty Ltd received formal advice from the Department of Planning in relation to the outcomes from the audit inspection. The advice from the Department of Planning identified areas of non-compliance as well as opportunities for improvement. The Department of Planning also requested a response to the formal advice which was to include an action plan to address the inspection findings. The Department of Planning issued a Notice of Intention to Give an Order dated 12th March 2008 and a Notice to Furnish Information or Records (or both). WCC has responded to Department of Planning.

A copy of the findings of the 1st February 2008 inspection are attached.

Results
Jan 2008 - March 2008

DEPOSITED DUST

Werris Creek Coal Pty Ltd

Date		EPA MON POINT 6		EPA MON POINT 7		EPA MON POINT 3		EPA MON POINT 5		EPA MON POINT 4		EPA MON POINT 8		EPA MON POINT 1														
In	Out	WC-1 ("Escott")				WC-2 ("Cindra")		WC-3 ("The Colliery")		WC-4 ("Hillview")		WC-5 ("Railway View")		WC-6 (Southern Boundary)		WC-7												
		Insoluble Matter g/m ² /month	Ash g/m ² /month	Ash Content %	Ash Content %	Insoluble Matter g/m ² /month	Ash g/m ² /month	Ash Content %	Insoluble Matter g/m ² /month	Ash g/m ² /month	Ash Content %	Insoluble Matter g/m ² /month	Ash g/m ² /month	Ash Content %	Insoluble Matter g/m ² /month	Ash g/m ² /month	Ash Content %	Insoluble Matter g/m ² /month	Ash g/m ² /month	Ash Content %								
5/11/07	3/12/07	1.0	0.5	50	1.2	0.6	50	4.8	1.6	33	0.7	0.4	57	0.7	0.4	57	5.9	4.6	78	0.7	0.4	57	5.9	4.6	78	0.7	0.4	57
3/12/07	4/01/08	0.4	0.2	50	0.7	0.3	43	2.5	0.8	32	0.5	0.3	60	0.4	0.2	50	6.5	2.0	31	0.4	0.2	50	6.5	2.0	31	0.4	0.2	50
4/01/08	6/02/08	0.4	0.3	75	0.7	0.6	86	2.7	0.6	22	0.6	0.4	67	0.4	0.3	75	3.1	2.1	68	0.4	0.3	75	3.1	2.1	68	0.4	0.3	75
6/02/08	5/03/08	0.4	0.2	50	0.7	0.4	57	5.9	1.7	29	0.5	0.3	60	0.5	0.3	60	6.9	2.9	42	0.5	0.3	60	6.9	2.9	42	0.4	0.3	75

NOISE MONITORING

DATE	TIME	RECEPTOR													
		R2 Zeolite	R3 Cintra	R4 Old Colliery	WCC	R5 Mountain View	WCC	R6 Hillview	WCC	R7 Railway View	WCC	R8 Hazeldeane	WCC	R10 Escott	WCC
8-Jan-08	13:00pm	35	43	44	40	wcc not audible	40	39	38	37	40	wcc not audible	37	wcc not audible	wcc not audible
8-Jan-08	7:30pm	48	45	47	40	wcc Audible not measurable	44	38	35	41	33	wcc not audible	44	wcc not audible	wcc not audible
8-9/01/08	12:55am	35	42	45	35	38	38	34	34	38	33	wcc not audible	41	wcc not audible	wcc not audible
26/02/2008	7:19am	47	40	47	33	32	40	32	32	35	36	wcc not audible	39	wcc not audible	35
26/02/2008	7:38pm	41	42	45	48	31	45	35	35	44	38	wcc not audible	48	wcc not audible	34
26/02/2008	10:10pm	35	40	45	41	32	45	38	38	43	36	wcc not audible	38	wcc not audible	33
18/03/2008	3:02 PM	37	41	45	45	40	42	37	37	38	41	wcc not audible	37	wcc not audible	30
18/03/2008	7:53 PM	46	47	47	42	<30	45	34	34	46	42	wcc not audible	43	wcc Inaudible	29
18/03/2008	10:02 PM	35	51	47	37	28	36	27	27	44	39	34	40	34	29

SHOT NO	DATE	MONITOR LOCATION	PEAK GROUND PRESSURE mm/s	PEAK OVER PRESSURE dBL	TIME
ORICA 59	2/01/2008	Glenala	D.N.T		1310
ORICA 59	2/01/2008	Railway View	D.N.T		1310
ORICA 59	2/01/2008	Old Colliery	D.N.T		1310
ORICA 59	2/01/2008	Escott Road	D.N.T		1310
ORICA 60	4/01/2008	Glenala	D.N.T		1309
ORICA 60	4/01/2008	Railway View	0.78	108.1	1309
ORICA 60	4/01/2008	Old Colliery	1.08	98.9	1309
ORICA 60	4/01/2008	Escott Road	0.31	97.7	1309
ORICA 61	11/01/2007	Glenala	D.N.T		1315
ORICA 61	11/01/2007	Railway View	2.26	114.8	1315
ORICA 61	11/01/2007	Old Colliery	2.23	111.3	1315
ORICA 61	11/01/2007	Escott Road	D.N.T		1315
ORICA 63	11/01/2008	Glenala	D.N.T		1315
ORICA 63	11/01/2008	Railway View	2.26	114.8	1315
ORICA 63	11/01/2008	Old Colliery	2.23	111.3	1315
ORICA 63	11/01/2008	Escott Road	D.N.T		1315
ORICA 64	16/01/2008	Glenala	D.N.T		1326
ORICA 64	16/01/2008	Railway View	1.13	112.9	1326
ORICA 64	16/01/2008	Old Colliery	1.6	83.3	1326
ORICA 64	16/01/2008	Escott Road	D.N.T		1326
ORICA 65	18/01/2008	Glenala	D.N.T		1315
ORICA 65	18/01/2008	Railway View	1.53	110.9	1315
ORICA 65	18/01/2008	Old Colliery	2.4	109.3	1315
ORICA 65	18/01/2008	Escott Road	D.N.T		1315
ORICA 66	23/01/2008	Glenala	D.N.T		1303
ORICA 66	23/01/2008	Railway View	0.93	110	1303
ORICA 66	23/01/2008	Old Colliery	1.58	111.6	1303
ORICA 66	23/01/2008	Escott Road	D.N.T		1303
ORICA 67	24/01/2008	Glenala	D.N.T		1312
ORICA 67	24/01/2008	Railway View	2.14	107.7	1312
ORICA 67	24/01/2008	Old Colliery	1.4	110.3	1312
ORICA 67	24/01/2008	Escott Road	D.N.T		1312
ORICA 68	25/01/2008	Glenala	D.N.T		1308
ORICA 68	25/01/2008	Railway View	1.48	106.9	1308
ORICA 68	25/01/2008	Old Colliery	0.95	104.5	1308
ORICA 68	25/01/2008	Escott Road	D.N.T		1308
ORICA 69	30/01/2008	Glenala	D.N.T		1313
ORICA 69	30/01/2008	Railway View	1.74	108.7	1313
ORICA 69	30/01/2008	Old Colliery	1.43	83.3	1313
ORICA 69	30/01/2008	Escott Road	0.33	96.8	1313
ORICA 70	1/02/2008	Glenala	D.N.T		1320
ORICA 70	1/02/2008	Railway View	2.11	113.6	1320
ORICA 70	1/02/2008	Old Colliery	1.78	83.3	1320
ORICA 70	1/02/2008	Escott Road	0.51	102.8	1320

SHOT NO	DATE	MONITOR LOCATION	PEAK GROUND PRESSURE mm/s	PEAK OVER PRESSURE dBL	TIME
ORICA 82	14/03/2008	Glenala	D.N.T		1309
ORICA 82	14/03/2008	Railway View	1.28	110.8	1309
ORICA 82	14/03/2008	Old Colliery	1.83	83.3	1309
ORICA 82	14/03/2008	Escott Road	0.46	101.8	1309
ORICA 83	17/03/2008	Glenala	D.N.T		1316
ORICA 83	17/03/2008	Railway View	1.86	104	1316
ORICA 83	17/03/2008	Old Colliery	0.95	109.1	1316
ORICA 83	17/03/2008	Escott Road	0.31	105	1316
ORICA 84	18/03/2008	Glenala	D.N.T		1312
ORICA 84	18/03/2008	Railway View	0.35	103	1312
ORICA 84	18/03/2008	Old Colliery	0.28	83.3	1312
ORICA 84	18/03/2008	Escott Road	D.N.T		1312
ORICA 85	19/03/2008	Glenala	D.N.T		1312
ORICA 85	19/03/2008	Railway View	0.75	104.6	1312
ORICA 85	19/03/2008	Old Colliery	0.5	86.8	1312
ORICA 85	19/03/2008	Escott Road	D.N.T		1312
ORICA 86	27/03/2008	Glenala	D.N.T		1312
ORICA 86	27/03/2008	Railway View	3.09	108.3	1312
ORICA 86	27/03/2008	Old Colliery	1.85	104.5	1312
ORICA 86	27/03/2008	Escott Road	D.N.T		1312

Results
Jan 2008 - March 2008

Groundwater Monitoring Results

Werris Creek Coal Pty Ltd

Sample Num	Sample Location	Sample Date	Sampler	Alkalinity - Total as CaCO3 mg/L	Arsenic - filterable mg/L	Cadmium - filterable mg/L	Calcium - filterable mg/L	Chloride mg/L	Chromium - filterable mg/L	Chromium - hexavalent mg/L	Copper - filterable mg/L	Depth to Ground metres	Depth to Standpipe metres	Electrical Conductivity uS/cm	Electrical Conductivity uS/cm - field	Lead - filterable mg/L	Magnesium - total mg/L
29086.01	MW1 - Hillview	16-Jan-08	S Gordon EEL		<0.00							50.91	51.21				
29086.02	MW2 - Railway View	16-Jan-08	S Gordon EEL	440	1	<0.00005	108	71	<0.001	<0.005	0.0012	27.18	27.33	1020		0.00026	59
29086.03	MW3 - Eurunderee	14-Jan-08	S Gordon EEL	450	0.011	<0.00005	113	447	0.01	<0.005	0.0035	14.94	15.33	2220	2130	<0.00005	93
29086.04	MW4 - Piezo 1	16-Jan-08	S Gordon EEL														
29086.05	MW4B	16-Jan-08	S Gordon EEL									9.51	10.14				
29086.06	MW5	14-Jan-08	S Gordon EEL	405	0.001	0.00028	265	674	<0.001	<0.005	0.0016	8.41	9.56	2850	2740	0.00026	126
29086.07	MW6	16-Jan-08	S Gordon EEL	725	0.001	<0.00005	85	248	<0.001	<0.005	0.0008	11.51	12.1	1960		0.0015	86
29086.08	MW7 - Rosehill	14-Jan-08	S Gordon EEL	152	1	<0.00005	51	64	<0.001	<0.005	<0.0005	4.35	4.47	540	520	<0.00005	21
29086.09	MW8 - Roseneath	16-Jan-08	S Gordon EEL	360	0.001	<0.00005	126	184	<0.001	<0.005	0.0025	17.6	17.8	1320		0.00008	62
29086.1	MW9 - Rail Siding	14-Jan-08	S Gordon EEL	420	1	<0.00005	93	39	<0.001	<0.005	0.0005	12.88	13.87	960	940	0.0001	47
29086.11	MW10 - Turbills	16-Jan-08	S Gordon EEL	355	0.001	<0.00005	118	358	<0.001	<0.005	0.0009	1876	1901	1950		<0.00005	117
29086.12	MW11 - Turbills's Gap Bore	16-Jan-08	S Gordon EEL	420	0.001	<0.00005	94	160	<0.001	<0.005	0.0048			1350		0.00026	65
29086.13	MW12 - Hazeldene	16-Jan-08	S Gordon EEL	310	1	<0.00005	109	92	<0.001	<0.005	0.0074	7.78	8.29	950		0.00018	38
29086.14	MW13 - Parkhill	16-Jan-08	S Gordon EEL	176	1	<0.00005	67	120	<0.001	<0.005	0.0008	5.42	5.92	790		<0.00005	31
29086.15	MW14	14-Jan-08	S Gordon EEL	465	1	<0.00005	90	46	<0.001	<0.005	0.0006	15.69	16.73	1090	1080	0.00007	61

Manganese - filterable mg/L	Mercury mg/L	Nickel - filterable mg/L	Nitrates mg N/L	NO SAMPLE: (w)	pH	pH - field	Phosphorus - reactive mg/L	Potassium - total mg/L	Sodium - total mg/L	Sulfates mg/L	Time: (w)	Total Nitrogen mg/L	Total Petroleum Hydrocarbons mg/L	Total Phosphorus mg/L	Zinc - filterable mg/L
0.001	<0.0001	0.003	7.6	No access	7.3		0.05	0.36	52	4	1045	7.4	<2	0.15	0.006
<0.001	<0.0001	0.007	0.28		7.3	7.4	0.39	18	119	18	1135	3.7	<2	0.5	0.082
				No sample							1455		<2		
				See comment							1000		<2		
0.016	<0.0001	0.008	2.2		7.0	7	0.01	1.4	153	66	1255	2.2	<2	0.05	0.01
0.002	<0.001	0.003	4.2		7.0		0.04	0.66	239	37	1227	4.1	<2	0.05	<0.005
0.003	<0.0001	0.001	1.4		7.0	6.8	0.06	0.79	39	27	1435	1.2	<2	0.52	0.019
0.001	<0.0001	0.007	4.6		7.0		0.01	1.4	76	24	1140	4.5	<2	1	0.007
<0.000															
1	<0.0001	0.003	6.4		7.1	7.1	<0.01	0.72	64	34	1707	6.2	<2	0.02	<0.005
0.001	<0.0001	0.004	24		7.3		<0.01	0.63	107	57	922	24	<2	0.01	0.005
0.001	<0.0001	0.003	13		7.6		0.03	0.47	121	31	900	13	<2	0.06	0.008
0.002	<0.0001	0.003	2.3		7.3		0.05	0.66	59	65	1210	2.2	<2	0.21	0.013
0.005	<0.0001	0.002	2.4		7.0		0.06	1.2	46	38	1105	2.3	<2	0.07	0.016
0.03	<0.0001	0.004	20		7.1	7.2	0.03	1.6	64	14	1555	20	<2	0.6	<0.005

Sample No	Sample Location	Sample Date	Sampler	Alkalinity- Total as CaCO ₃ mg CaCO ₃ /l	Electrical Conductivity μ S/cm - field	Electrical Conductivity μ S/cm - lab	Nitrate mg/l	Oil & Grease mg/l	pH - field	pH - lab	Phosphorus reactive mg/l	Time (w)	Total Nitrogen mg/l	Total Phosphorus mg/l	Total Suspended Solids >105C mg/l	Comments
29038.01	MV Dewatering Dam	14-Jan-08	S Gordon EEL		840	860	3	<2	8.2	8.1	<0.01	1105	3.2	0.13	2	
29084.01	MV1	14-Jan-08	S Gordon EEL		1090	1090	3.2	<2	7.1	7.6	<0.01	915	3.2	0.03	<2	
29084.02	SD1	14-Jan-08	S Gordon EEL			175	3.1	<2		7.4	0.05	1015	3.1	0.43	22	
29084.03	SD2	14-Jan-08	S Gordon EEL			260	1.1	<2		7.4	0.2	1025	1.1	0.29	10	
29084.04	SD3	14-Jan-08	S Gordon EEL			360	1.4	<2		8.3	0.21	1420	1.4	0.3	5	
29084.05	SD4	14-Jan-08	S Gordon EEL			270	1.1	<2		8.9	0.21	1435	1.1	0.39	15	
29084.06	SD5	14-Jan-08	S Gordon EEL		285	280	<0.01	<2	8.9	9	0.35	1025	1.8	0.42	11	
29084.07	SD6	14-Jan-08	S Gordon EEL		640	630	0.01	<2	9.5	9.5	0.15	1035	3	0.7	220	
29084.08	SD7	14-Jan-08	S Gordon EEL		440	430	0.02	<2	8.6	8.5	0.54	1050	0.66	0.7	21	
29084.09	SD8	14-Jan-08	S Gordon EEL									1440				
29084.1	SD9	14-Jan-08	S Gordon EEL				0.31	<2	7.8	7.4	0.17	1240	1.4	0.7	22	
29084.11	SD10	14-Jan-08	S Gordon EEL		175	170						845				
29084.12	SD11	14-Jan-08	S Gordon EEL		110	110	0.47	<2	7.5	7.3	0.95	1730	2.8	0.95	129	
29084.13	SD12	14-Jan-08	S Gordon EEL		110	110	0.26	<2	7.6	7.5	0.03	1740	1.4	0.49	328	
1	SB2 (EPA 10) was SD7	5-Feb-07	WCC staff			0.44	0.032	<5			<0.02		0.7	0.02	38	Wet Weather Discharge event 05/02/2008
2	EPA 23 WC-UP	6-Feb-08	WCC staff			0.25	0.013	<5			0.54	1430	1.2	0.61	130	Wet Weather Discharge event 06/02/2008
3	EPA 24 WC-DOWN	6-Feb-08	WCC staff			0.26	0.16	<5			0.53	1440	0.4	0.51	80	Wet Weather Discharge event 06/02/2008
4	EPA 25 QC-UP	6-Feb-08	WCC staff			0.4	0.047	<5			0.13	1510	0.5	0.14	295	Wet Weather Discharge event 06/02/2008
5	EPA 26 QC-DOWN	6-Feb-08	WCC staff			0.39	0.064	<5			0.16	1500	1	0.11	145	Wet Weather Discharge event 06/02/2008



Contact: George Hawke
Phone: 9228 6115
Fax: 9228 6366
Email:
george.hawke@planning.nsw.gov.au
Our ref: S08/00175

Mr Peter Easey
Coal Processing Manager
Werris Creek Coal Pty Ltd
PO Box 125
WERRIS CREEK NSW 2341

12 March 2008

Dear Mr Easey

Werris Creek Coal Mine: Inspection of 1 February 2008

An inspection of the mine was undertaken by George Hawke and Rohan Tayler on 1 February 2008, accompanied by Lindsay Fulloon of the Department of Environment and Climate Change (DECC) and Mr Gordon Atkinson, the Manager Engineering and Environment. The inspection was carried out to evaluate compliance of the mine's operations with the development consent from the Minister for Planning, determined on 18 February 2005 and modified on 19 October 2005 and 6 March 2007.

The inspection focused primarily on the consistency of the operations with the approval, general environmental management, noise management, blasting and vibration management, surface water and groundwater management, and environmental monitoring.

The inspection noted that the acquisition of the "Old Colliery" property on 6 February 2008 and the proposed acquisition of "Railway View" will assist with compliance with the noise, blasting and PM₁₀ criteria for the mine.

Findings referred to DECC

As the following findings represent potential non-compliances with Environment Protection Licence (EPL) No. 12290, they have been referred to the DECC.

1. Noise was measured for 15 minutes duration, not 30 minutes as required by the EPL.
(EPL, Condition M2.1)
2. The airblast overpressure criterion was exceeded at "Railway View" on 23 January 2007, 15 May 2007 and on 3 July 2007. It is understood that the DECC has warned the mine a number of times as a result of blast exceedances and has issued one fine for a blast exceedance. Site staff informed that the mine is acquiring "Railway View".
(EPL, Condition L8.1)
3. On 20-21 August 2007 the total suspended solids during wet weather discharges was 60 mg/L (SD7), 110 mg/L (SD9) and 125 mg/L (SD10), which exceeded the limit of 50 mg/L. During this discharge the total suspended solids upstream was 92 mg/L (Quipolly Ck) and 165 mg/L (Werris Ck) and the total suspended solids downstream was 125 mg/L (Quipolly Ck), 690 mg/L (Werris Ck). The mine has been requested to provide information about any other wet weather discharges during 2007-2008.
(EPL, Condition L3.3)
4. The ground water was not sampled at "Hillview" (MW1) during August 2007 and November 2007. Site staff informed that the pump was disconnected in during August 2007.
(EPL, Condition M2.1)

Findings of non-compliance

The inspection found the following non-compliances with the development consent:

1. Evaluation of the noise measurements between 12 April 2007 and 10 Dec 2007 showed that with respect to $L_{Aeq(15\text{ minute})}$:
 - Frequency of exceedances of noise criterion (35 dBA): 36 % of measurements at "Old Colliery".
 - Frequency of exceedances of limits in private noise agreements (40 dBA): 17% of measurements at "Cintra"; 16% of measurements at "Zeolite Australia".
 - Maximum noise levels measured were: 51 dB(A) at "Cintra", 45 dB(A) at "Zeolite Australia", 44 dB(A) at "Old Colliery", 38 dB(A) at "Mountain View" and 37 dB(A) at "Escott".
 - Degree of the maximum exceedance of the noise criteria: 11 dBA at "Cintra", 9 dBA at "Old Colliery" and 5 dBA at Zeolite Australia.
 - The peak noise levels have increased significantly in the past 12 months at "Cintra" (38 dBA to 51 dBA) and "Zeolite Australia" (41 dBA to 45 dBA).

However, there was no evidence of notification to the Director-General in accordance with Schedule 5 Condition 2 and it is unknown whether the above landowners were notified. In respect of this matter, a "Notice to provide information and records" under S122Q of the EP&A Act is being forwarded by registered mail; a copy is attached to this letter for your information.

The mine has informed that "based on advice from our acoustic consultant, a significant contributor to the noise issue is the dozer operating on the rail load out stockpile" (letter of 26 February 2008). The Department notes that the mine has proposed noise ameliorative measures.

2. Site staff were unable to confirm that all reversing alarms fitted to vehicles on the site were of a mid-high frequency broadband type.
(Schedule 4, Condition 10)
3. There was no evidence in the AEMR of a review or recalculation of the site water balance.
(Schedule 4, Condition 31).

Also, there was no evidence that a review of the site water management had been undertaken (AEMR review).

5. According to the Environmental Monitoring reports, the PM_{10} level at "Old Colliery" was 56 ug/m^3 on 17 April 2007 and 52 ug/m^3 on 19 November 2007, which was above the short-term criterion of 50 ug/m^3 . However, there was no evidence of notification to the Director-General in accordance with Schedule 5 Condition 2 and it is unknown whether the landowners of "Old Colliery" were notified. It is noted that site staff informed that the mine acquired "Old Colliery" on 6 February 2008.
(Schedule 4, Condition 1)

In respect of this matter, a "Notice to provide information and records" under S122Q of the EP&A Act is being forwarded by registered mail; a copy is attached to this letter for your information.

4. Site staff informed that the production bore (No. 90BL252588) was licensed with DWE to extract 20 ML/year. According to the AEMR, 44 ML was extracted from the production bore between April 2006 and March 2007, which exceeds the limit of 20 ML/yr (p.26).

In respect of non-compliances 1, 2 and 3, a "Notice of Intention to Give an Order" under S121B of the Environmental Planning and Assessment (EP&A) Act is being forwarded by registered mail; a copy is attached to this letter for your information.

Improvement Opportunities

The following improvement opportunities were also observed during the inspection:

1. The two dams that overflow at LDP 10 were full of water and could discharge if there was further rainfall. Because there was no wet-weather access, these dams could not be pumped down.
2. Although diesel fuel was kept in bunded tanks, there was evidence of spillage on the ground from filling hoses and from dispensing nozzles. There is a need for improved spill containment measures where there is a risk of spills near the fuel tanks.
3. Oils were stored at the back of the wash bay in 200 L drums and IBCs which were placed two layers high close to the edge of the low bund wall. Any spillage from the upper tanks or upper IBCs could flow over the wall and there was a possibility of the upper drums falling over the bund wall. Also, "empty" IBCs which contained residual fluid were stored in an open unbunded area south-west of the wash bay. There is a need to ensure that oils are managed in accordance with the DECC's guideline on "Bunding and spill management". This matter was also raised by the DPI in their letter to the mine of 17 September 2007.
4. Site staff informed that 39,534 tonnes of coal had been transported from the development by public road between January 2007 and December 2007. It is noted that if this rate is maintained during January 2008 to March 2008, then this could lead to an exceedance of the limit of 30,000 tonnes for the year April 2007 to March 2008. It is understood that the mine proposes to seek to increase the limit to 50,000 tonnes per year. (Schedule 3, Condition 7)

In respect of this matter, a "Notice to provide information and records" under S122Q of the EP&A Act is being forwarded by registered mail; a copy is attached to this letter for your information.

5. A number of piezometers that were monitoring impacts on underlying aquifers had been removed due to the progression of mining activity. The mine proposes to install three piezometers to address this issue (letter on 26 February 2007).

In respect of this matter, a "Notice of Intention to Give an Order" under S121B of the EP&A Act is being forwarded by registered mail; a copy is attached to this letter for your information.

6. When the proposed changes in the site drainage system (Fig.3 of the Surface Water Management and Monitoring Plan, Dec 2007) are implemented, there is a need to update the Site Water Management Plan and the EPL.
7. The nitrate levels were not included in the quarterly monitoring report for groundwater monitoring for April 2007 and August 2007. (EPL, Condition M2.1)
8. Data recovery for the weather station was 18% in July 2007 and 25% in December 2007. It is understood that this was due to a weather station fault and battery malfunction and power loss to the on-site computer which has since been rectified.
9. The locations of PM₁₀ monitoring sites WCHV 1 and WCHV 2 have been interchanged in the Air Quality Monitoring Programme (Appendix 1, p. 10-11).

As some of these findings also relate to conditions within with EPL, they have also been referred to the DECC.

I request that you provide a written response by 26 March 2008, including an action plan to address the inspection findings. Please do not hesitate to contact George Hawke if you need clarification of the above or wish to discuss this matter.

Yours sincerely



John Sparkes
Compliance Manager

Attachment:

- Notice of Intention to Give an Order
- Notice to provide information and records

CC: Department of Environment and Climate Change

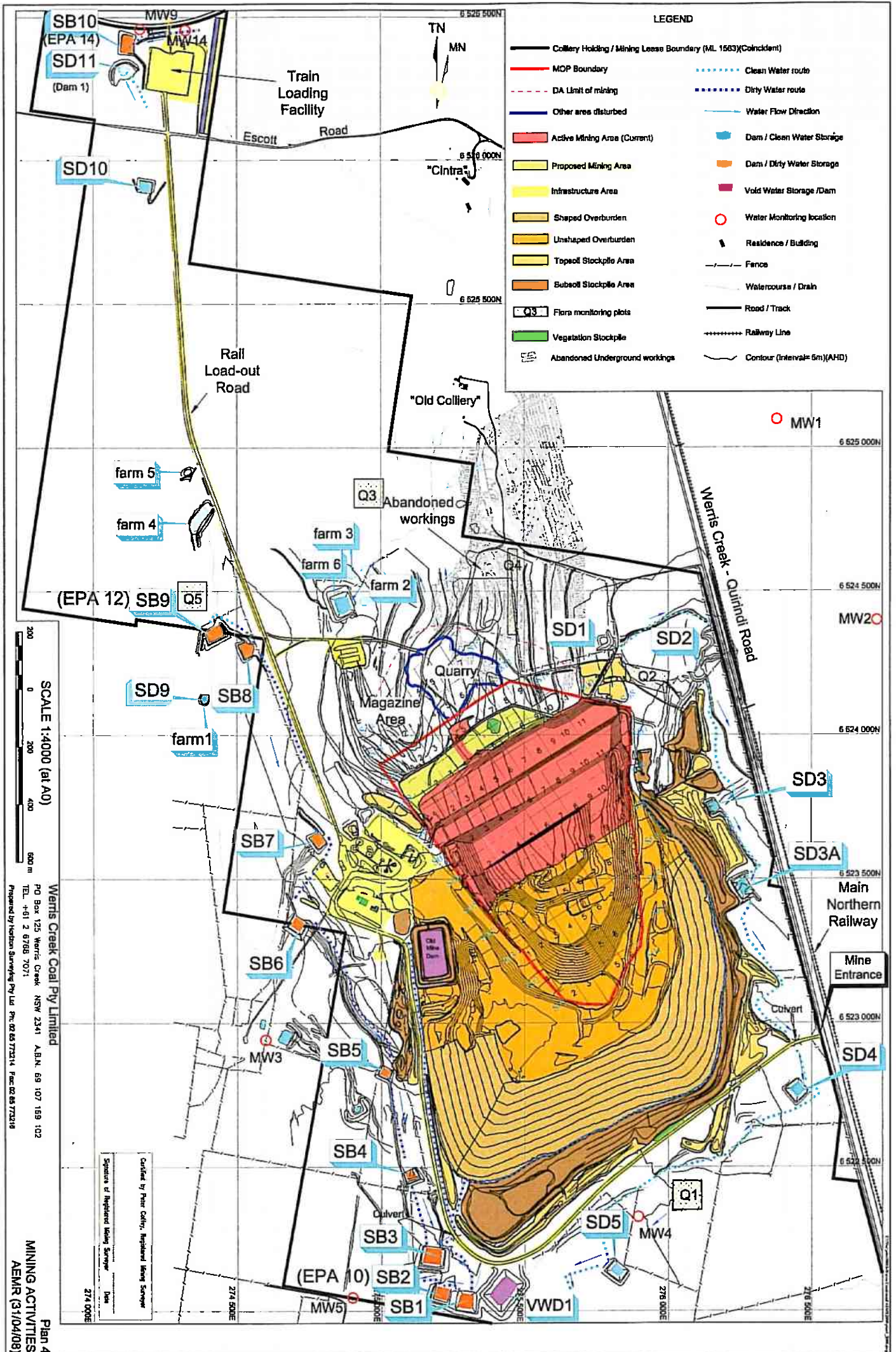
THE [illegible]

[illegible]

[illegible]

[illegible]

[illegible]



Werris Creek Coal Mine Community Consultative Committee

Ninth Meeting of the Committee

Tony Caine Room, Quirindi RSL Club

10.00am 4th September 2008

MINUTES

1. Record of Attendance Ron Short (Chairman); Jill Coleman (Community Representative); Lindsay Bridge (Community Representative); Noel Taylor (Community Representative); Des George (MME); Merv Prendergast (LPSC) Lynden Cini (Environmental Officer WCC); Lee McDonagh (WCC).

Apologies Chris Holley (Community Representative); Casper Dieben (General Manager WCC); Bob Stewart (LPSC).

Attendance and Apology Record Motion moved by Noel Taylor, seconded by Merv Prendergast.

Ron Short noted that he had not yet received a response from Department of Planning with regards to Tony Ryans resignation.

2. Matters Arising

Jill Coleman requested clarification of Merv Prendergast statement “that it is a huge cost for council to repair local roads, and that company should think about damage to local roads/towns and come up with figure per tonne/km to pay for use and maintenance of local roads.”

Merv Prendergast responded that in order to make any major changes to his request that the process would involve a modification to the DA Consent. He also stated that the mine has come on board with his request and has demonstrated faith and goodwill to gain an outcome.

Lynden Cini explained that WCC did receive a fine for exceeding the maximum haulage amount of 30,000 tonnes allowed for the domestic market and that WCC had to cut back on domestic sales this week in order to stay within the current consent conditions. This had resulted in protest from customers unable to purchase WCC coal to operate their businesses.

3. Minutes of Previous Meeting

Minutes of the previous meeting 5th June 2008 accepted as true representation of business conducted on day. Motion moved.

Moved Merv Prendergast, Seconded Lyndsay Bridge.

4. Declaration of Pecuniary or other interests

None declared.

5. New Matters for discussion under General Business

- Dust from trains
- Night lighting
- Road haulage, and
- LPSC McDonalds Pit Quarry

6. Discussion AEMR 2007 - 2008

Lynden Cini explained that the Annual AEMR Site Inspection would be held on the 9th September, 2008. Departmental representatives from DoP, DPI, DECC, Dept Water and Energy etc would be in attendance.

General discussion followed concerning extent of involvement by department officers at an AEMR inspection. Lynden Cini added that an Independent Environmental Audit was undertaken in August and that the company URS who undertook the Audit was approved by the Director General as per DA Consent. This Audit is required to be undertaken every three years. Ron Short commented that because WCC chose the company to undertake the Audit there was less transparency to this process. Lynden Cini proposed that the engagement of URS was undertaken within the guidelines of the consent and the process was indeed an independent review. Merv Prendergast questioned if WCC tendered companies for the audit. Lynden Cini responded No. Merv Prendergast then asked if it were possible that in 3 years time when next Independent Environmental Audit is undertaken could WCC tender and could a CCC member be a part of the tender process.

General discussion on AEMR reviews.

Lynden Cini to distribute CD's with AEMR to Jill Coleman and Lindsay Bridge so all members of CCC have a copy.

Noel Taylor questioned why there had been no council representation at several of the previous meetings. Merv Prendergast explained his position within Council and his background.

Ron Short explained the need to have top level people at the site review as there is a lot of new and upcoming officers who do not have the clout that top departmental officers have.

Merv Prendergast stated that in his previous experience he has followed up AEMR issues etc. Ron Short commented on slack LPSC commitment previously and applauded Merv Prendergast for attending CCC meetings and hope that this continues.

Ron Short explained he received a letter in August from LPSC with regards to WCC Road Haulage, the letter directs the CCC members to find out more information on domestic loads exiting WCC and using local roads. Ron Short stated that the council has no authority to direct CCC to do anything and that there is going to be huge implications for council on secondary roads and services.

Jill Coleman said that of all the WCC domestic sales the majority go out of the council anyway, to Armidale, Tamworth, Gunnedah etc.

Merv Prendergast explained the process needed with mine planning focus meetings to identify concerns and that he is trying to awaken CCC's and Council to issues that could arise and urge them to think ahead.

Des George commented that Whitehaven has been operating at Gunnedah for 10 years and that they have a very good relationship with Gunnedah Shire Council and now that Whitehaven fully owns WCC that this should be the case for the LPSC.

Ron Short stated that people need to be aware of cumulative effects as it is the ratepayers who will pick up the pieces eventually.

Motion Moved that CCC has received AEMR 07-08 and accepts document tabled. In addition once CD's are delivered that if there are any points for discussion, they should be forwarded to either Merv or Lynden prior to the AEMR site inspection. Moved by Noel Taylor and seconded Lindsay Bridge.

7. Discussion Quarterly Monitoring Results July, August, September 2007

Lynden Cini presented overview of results.

Ron Short – ‘Marengo Issue’ Neville Davies has spoken to Ron Short and told him that he is not happy with WCC responses to noise, dust and telephone calls. Neville Davies has also expressed his views to Lindsay Bridge.

Lynden Cini explained that company representatives had met with Mr. Davies on numerous occasions and that monitoring results had all been below criteria.

Ron Short stated that whilst monitoring results might be below criteria the environmental impact can have an effect and that WCC need to resolve issues if complaints are genuine.

Merv Prendergast said that there are always habitual complainers and that it is the CCC job to assess complaints and have an input into resolution.

Lynden Cini provided a full history of accounts between WCC and Mr. Davies. Lynden explained that after complaints were received noise and blast monitoring were undertaken at Marengo with negative results. Lynden Cini and the mine manager Mr. Peter Easy had regularly met with Mr. Davies. Peter Easy also personally attended the Davies house when blasts were fired and late at night to listen to the noise. At one stage there were daily communications with the Davies. WCC undertook a structural assessment of the property and also offered to fit extras such as first flush water system, air conditioning and double glazing to the Davies property. Mr. Davies requested to speak to General Manager re sale of “Marengo” at a set price. The GM on behalf of the company explained they were not interested in purchasing. WCC offered to repair, seal and paint any walls at the house. Mr. Davies rejected this offer. Mr. Davies then requested that a new house be built. The company rejected this offer. WCC has made all reasonable endeavors to meet Mr. Davies complaints.

Ron Short and other committee representatives explained that they were not fully aware of all the things that the company had done to resolve issues at Marengo. Lynden explained to the committee that should any representatives from community contact reps with complaints they should to be forwarded onto the complaints hotline.

Lynden Cini stated that he and the site manager do work together to do everything in their power to appease neighbours and provided assistance when required.

Ron Short asked that all offers of assistance be done in writing.

Ron Short asked if there was any outcome from dam breach – Lynden Cini responded that no it was still pending.

Noel Taylor said that he had received a phone call from someone asking him if his ground water supply had been affected with the mine. He said no it had'nt. The person also commented that there appeared to be a lot of water in the pit. Lynden Cini and Des George gave overview of structure of impenetrable basin and underground workings.

Jill Coleman questioned groundwater readings for MW4B, Lee McDonagh to check results.

Lynden Cini explained that the Pacific National Stop/Go problem was an operational error on behalf PN, Merv Prendergast supported this by saying that he had observed the one time since the last meeting that the problem occurred and that it was poor work practice on behalf of Pacific National.

Ron Short stated that CCC would draft a letter to Pacific National on these matters and train dust.

Motion Moved that Quarterly results be accepted. Moved by Merv Prendergast and seconded Lindsay Bridge.

8. General Business

History of Underground Workings (item to remain as Agenda Item)

Work in Progress, Des George stated that Centennial Coal were still working on it.

Train Dust

To be addressed in letter to Pacific National. Merv Prendergast stated that he would be happy to write to PN also. He was aware of two issues only, where 1. Coal had fallen off a train and 2. Coal dust complaint. He had not received any written complaints and he personally had not observed any incidences of coal dust. Once CCC letter was drafted could it be sent to him at LPSC.

Ron Short questioned if there were different dust levels between Gunnedah Coal and WCC Coal.

Night Lighting - Jill Coleman – John Colvil who lives near “Marengo” told her that he was hearing a lot of noise at 3 am and there was significant light.

Des George said that adjustments can be made to the lights and that he would look at that.

Merv Prendergast asked if MME could put hoods on lights. Des George said he thought some already had hoods but he would look into it.

Lynden Cini commented that the correct action form Mr. Covil should be to call the complaints hotline.

Road Haulage

Refer LPSC letter, Ron Short stated that it is the long term road haulage impact. He asked at what stage WCC's submission to DoP pertaining to increasing domestic sales from 30,000 tonnes to 50,000 tonnes was at. Lynden Cini said that it had been sent some weeks ago and that hopefully he would receive word next week.

Merv Prendergast stated that council is now aware that road maintenance is an issue to be looked at and to seek assistance from Whitehaven. The domestic sales is not a problem but further development at other mines will cause damage to secondary council roads when building infrastructure etc.

General discussion followed on what CCC can learn from WCC and using it when dealing with the big mine companies in the future.

Ron Short referred back to the LPSC letter and asked that is movement of coal off site recorded. This was confirmed by Lynden Cini.

Merv Prendergast requested that the number of loads transported on LPSC roads be reported in AEMR.

McDonalds Pit (Quarry)

Merv Prendergast stated that the quarry makes water and LPSC is concerned. Merv indicated council trucks were drawing water from the quarry and instead of using for dust suppression/compaction had released the water into Quipolly creek. Merv also noted that LPSC had notified DECC of this. The issue with the water in the quarry is that it contains elevated levels of Total Suspended Solid matter. The Quarry also overflows into the mine lease which is a problem for both WCC and LPSC.

Two options:

1. Council to approach the mine to use the quarry themselves and then mine provides quarry gravel to council, or
2. Approach Lynden Cini/WCC and work on an approach to manage overflows from quarry.

Council is concerned that if there is a breach following significant rain event that council could be responsible for high readings at the mine site.

Lynden Cini explained that he was aware of two individual breaches of the highly turbid water onto the mine lease from the quarry and felt that this addition to TSS loadings in WCC sediment basins could attribute to an exceedance should the site ever discharge. Lynden agreed to work closely with council until a resolution is reached.

Backfilling Noel Taylor questioned that there did not seem to be a lot happening. Lynden Cini assured Noel backfilling was occurring and offered to give Noel a tour of the site and provided an open invitation to committee members, Lindsay Bridge also accepted. This was agreed too.

On Site Meetings – Merv Prendergast suggested CCC meet on site rather than RSL Club in Quirindi. All agreed.

Noise - Noel Taylor has a current issue with noise but is currently talking with Lynden Cini.

General Discussion in regards to Catchment Management Authority work being carried out in Quipolly Creek downstream of mine.

Jill Coleman questioned why the big tree trunks on the rehab site. Lynden Cini explained that they have been placed on the rehab to provide habitat for fauna species.

Noel Taylor and Lindsay Bridge both feel that CCC member should be compensated for their time/fuel etc. Ron Short will approach Department of Planning on this matter and report back next meeting.

AGENDA ITEM – Remuneration to CCC members

Lynden Cini gave update on site visit by Colin Phillips and associates from the Department of Planning, current MOP submission, extension of operations which will require a new Environmental assessment and Development Consent and new MOP. The company was looking at starting work on this as soon as possible.

Merv Prendergast suggested he could start the ball rolling on a Focus Planning Meeting.

Meeting Closed 1.05 pm.

9. Next

Meeting

Meeting date to be discussed between Ron Short and Lynden Cini in three months time. All agreed that Thursday was the best day to hold the meetings.

Copy to:

Ron Short	Chairman
Chris Holley	Local Community Representative
Jill Coleman	Local Community Representative
Noel Taylor	Local Community Representative
Lindsay Bridge	Local Community Representative

Colin Phillips	DoP
Monique Meyer	DPI
Bob Stewart	LPSC
Merv Prendergast	LPSC

Des George	MME
Les Latcham	MME

Casper Dieben	WCC
Danny Young	WCC
Lynden Cini	WCC
Peter Easey	WCC



WERRIS CREEK COAL PTY LTD

ENVIRONMENTAL MONITORING

1st QUARTERLY REPORT

April, May, June 2008

This report covering the period 1st April 2008 to 30th June 2008 is the first quarterly Environmental Monitoring Report for the 2008/9 Annual Environmental Management Report (AEMR) reporting period (1 April 2008 to 31 March 2009).

The report includes environmental monitoring results for the on-site Weather Station, Air Quality, Noise (operational and blasting), Surface and Ground Water together with complaints received and general detail covering site environmental matters.

Note: Monitoring results with any non compliance of monitoring criteria are highlighted in **yellow**.

CONTENTS

1.0	WEATHER STATION	3
2.0	AIR QUALITY	3
2.1	HVAS (PM10) Monitoring	3
2.1.1	Monitoring Data Results.....	3
2.1.2	Discussion - Compliance / Non Compliance.....	4
2.2	DEPOSITED DUST.....	4
2.2.1	Monitoring Data Results.....	4
3.0	NOISE	4
3.1	OPERATIONAL NOISE	5
3.1.1	Monitoring Data Results.....	5
3.1.2	Discussion - Compliance / Non Compliance.....	5
3.1.3	Action Taken	5
3.2	NOISE COMPLAINTS.....	6
4.0	BLAST	6
4.1	BLAST MONITORING.....	6
4.1.1	Monitoring Data Results.....	6
4.1.2	Discussion - Compliance / Non Compliance.....	6
4.1.3	Action Taken	6
4.2	BLAST COMPLAINTS	6
5.0	WATER.....	6
4.1	GROUND WATER.....	6
4.1.1	Monitoring Data Results.....	6
4.1.2	Discussion - Compliance / Non Compliance.....	6
4.2	SURFACE WATER.....	6
4.2.1	Monitoring Data Results.....	6
4.2.2	Discussion - Compliance / Non Compliance.....	6
6.0	COMPLAINTS SUMMARY	7
7.0	GENERAL	7

Appendices

Appendix 1	Deposited Dust Monitoring Results
Appendix 2	Noise Monitoring Results
Appendix 3	Blast Monitoring Results
Appendix 3	Ground Water Monitoring Results
Appendix 4	Surface Water Monitoring Results

1.0 WEATHER STATION

WEATHER

Weather data was available for 95 % of April. Data loss occurred on the 1st of April and the 30th April.

Weather data was available for 100 % of May.

Weather data was available for 100% of June.

2.0 AIR QUALITY

2.1 HVAS (PM10) Monitoring

High Volume Air Sample (HVAS) monitoring for particulate matter less than 10 micron in size (PM10) is conducted at four sites listed below.

WCHV1 – “Old Colliery” or Marquettes

WCHV2 – Pattersons

WCHV3 – “Railway View” or Ryans

WCHV4 – “Eurunderee”

In addition a fifth site WCHV5 at “Railway View” continues to sample total suspended particulate (TSP) matter to monitor the PM10/TSP relationship on a voluntary basis to assist with government departmental air quality data collection and correlation.

Sample data is scheduled for 24 hours every 6 days in accordance with DECC – EPA protocols and results are reported as micro grams per cubic metre of air sampled or ug/m3.

2.1.1 Monitoring Data Results

Werris Creek HVAS results									
Date						24hr criteria	annual criteria		PM10/TSP Ratio
	Marquett (PM10)	Patterson (PM10)	Ryan (PM10)	Eurunderee (PM10)	Ryan TSP	PM10	PM10	TSP	
5/04/2008	12	2	15	5	16	50	30		94%
11/04/2008	24	6	6	6	23	50	30		26%
17/04/2008	18	6	5	14	12	50	30		42%
23/04/2008	11	3	2	5	12	50	30		17%
29/04/2008	26	5	18	4	50	50	30		36%
5/05/2008	11	7	12	10	35	50	30		34%
11/05/2008	16	18	24	40	39	50	30		62%
17/05/2008	26	29	23	25	39	50	30		59%
23/05/2008	23	14	13	47	21	50	30		62%
29/05/2008	23	17	20	21	28	50	30		71%
4/06/2008	3	1	1	44	2	50	30		50%
10/06/2008	2	2	1	2	5	50	30		20%
16/06/2008	1	1	6	2	7	50	30		86%
22/06/2008	1	1	1	1	3	50	30		33%
28/06/2008	8	8	13	6	37	50	30		35%

2.1.2 Discussion - Compliance / Non Compliance

All individual PM10 24 hour average results, at all sites, were equal to or below the short term 24 hour impact criteria of 50ug/m³.

All PM10 sites are below the long term impact and land acquisition annual impact criteria of 30ug/m³.

The TSP site is below the long term impact and land acquisition annual impact criteria of 90ug/m³.

2.2 DEPOSITED DUST

Limits were removed from Environment Protection Licence 12290 pertaining to mean annual dust deposition, however, in accordance with commitments within the approved Air Quality Monitoring Programme, monthly routine air quality monitoring for Werris Creek Coal continues to be undertaken for deposited dust.

2.2.1 Monitoring Data Results

As can be seen in Appendix 1, there were four sets of elevated results for depositional dust during the period. These results were sampled from a receptor on the mine lease and from the "Old Colliery" which is a project related property.

2.3 AIR QUALITY COMPLAINTS

2 Complaints Received .

3.0 NOISE

Noise Monitoring is conducted by Spectrum Acoustics at the following locations:

R2: Zeolite, R3: Cinta, R4: Old Colliery, R5: Mountain View, R6: Hillview (mine owned residence) R7: Railway View, R8: Hazeldene, and R10: Escott. Three sets of measurements are made over the "circuit", one during the day time period, (before 6pm), one during the evening period (from 6pm – 10pm) and one at night (after 10pm).

The noise emission criterion for WCC is 35dB(A) unless otherwise subject to a current, legally binding agreement between WCC and the occupant of the affected residential property. Hillview, Railway View and Old Colliery (Marquett) are mine owned residences and as such monitoring results above 35dB(A) are not recorded as non-compliances.

WCC environmental licence conditions indicate that compliance with noise emission criteria is not applicable under atmospheric conditions where wind speeds are higher than 3m/s and/or there is temperature inversion of greater than +3 degreesC/100m.

3.1 OPERATIONAL NOISE

3.1.1 Monitoring Data Results

23 rd April	Railway View	8:43 pm	2.0 m/s 167°	WCC (39) Exceedance of 4 dB(A)LAeq
30 th June (Day)	Cintra	3:29 pm	2.4 m/s 320°	WCC (44) Exceedance of 7 dB(A)LAeq

3.1.2 Discussion - Compliance / Non Compliance

23rd & 24th April, Railway view – The elevated noise levels recorded at Railway view during the evening monitoring were caused by general emissions from the pit. It is believed the sample was taken before operators had taken machinery below ground level, which is the normal practice for reducing emissions.

30th June, Cintra – Noise exceedance during the day at Cintra was due to noise emissions from a dozer working on the coal stockpile at the rail load-out facility. Operator believed to be reversing down stock pile in 2nd gear which is outside of WCC 1st gear reverse policy.

All other elevated levels represented in Appendix 2 are not exceedances. This may be due to one or a combination of three factors, those being:

- Temperature inversion of greater than +3 degreesC/100m.
- Wind speeds greater than 3m/s.
- A private agreement with the landholder.

3.1.3 Action Taken

The Railway view property has been purchased by Whitehaven Coal and is now a project related property.

After careful review of the “Cintra” noise exceedance by WCC staff, the external acoustic consultant provided field notes taken on the day of analysis explaining the dozer working the stockpile during the monitoring period did not operate under the 1st gear reverse policy. Early tests undertaken at the Gunnedah CHPP indicate a 7-9dB reduction when reversing in 1st gear as compared with reversing in 2nd gear. WCC would like to advise the committee that the Site Manager has undertaken additional toolbox talks and provided clear instructions to operate under the 1st gear reverse policy with individual dozer operators. We believe that if this policy is maintained then exceedances of this nature should be greatly reduced.

Following a complaint received in March from Mr. N. Davies of the property “Marengo” Spectrum Acoustics were engaged to undertake noise monitoring at the “Marengo” property on the afternoon, evening and night of 23rd April 2008. The results (see Appendix 2) show that received noise levels did not exceed the 35 dB(A)LAeq(A) Leq(15 min) noise criterion during the monitoring period. Additional noise monitoring has been undertaken at “Marengo” since and WCC are continuing a close relationship with Mr. Davies and are still providing assistance in this area until a beneficial outcome is reached.

3.2 NOISE COMPLAINTS

No complaints were received regarding noise.

4.0 BLAST

During this reporting period a total of 20 blasts numbered ORICA 87 to ORICA 106 were fired.

4.1 BLAST MONITORING

4.1.1 Monitoring Data Results

See Appendix 3.

4.1.2 Discussion - Compliance / Non Compliance

All blasts complied with blast criterion.

4.1.3 Action Taken

No Actions necessary.

4.2 BLAST COMPLAINTS

No Complaints received regarding blasting.

5.0 WATER

Groundwater monitoring was undertaken in April 2008 by Ecowise Environmental.

Surface water monitoring was undertaken in April 2008 by Ecowise Environmental.

4.1 GROUND WATER

4.1.1 Monitoring Data Results

See Appendix 4 Groundwater Monitoring Results.

4.1.2 Discussion - Compliance / Non Compliance

No recorded exceedances.

4.2 SURFACE WATER

4.2.1 Monitoring Data Results

See Appendix 5 Surface water monitoring Results.

4.2.2 Discussion - Compliance / Non Compliance

No exceedances.

6.0 COMPLAINTS SUMMARY

2 Complaints were received during this period.

Telephone Call to Lindsay Fulloon DECC	Unknown resident of Werris Creek	No 26 1/04/2008	Plume of dust moving east off site across Werris Creek/Quirindi Road at approximately 8.30am.		Email to Lindsay Fulloon detailing operation of dust suppression activities undertaken at the time of complaint, consultation with MME and L Cini's observation of site at that time of morning. DECC pleased with WCC response.
Complaint made to Peter Easey	Mr Lindsay Patterson	No 27 22/05/2008	Coal dust blowing off train carriage & onto property. Concerned that tank water may contain coal dust.	L Cini visited property and spoke to Mr Patterson.	L Cini offered to install first flush system and in line filter. Items purchased and installed at cost to WCC on rain water supply at Patterson residence. L Cini rang Mr Patterson on 24/06/2008 to confirm abovementioned works had commenced. Mr Patterson indicated he was happy with work to date.

7.0 GENERAL

As can be seen from the road there has been a lot of progress on the rehab area facing the Werris Creek / Quirindi Road which has generated a great deal of interest within the local community. Fallen timber has been re-established on the rehab providing additional habitat and will encourage the repopulation of a variety of native fauna species. A mass planting of White box, Yellow Box and Blakely's Red Gum (an endangered ecological community as recognised within the Werris Creek EIS) has also been undertaken. Approximately 3100 individual tube stock plants, of the above mentioned species have been planted on the rehab area, with an additional 400 odd plants being planted around the train load-out area to assist in reducing potential visual, dust and noise impacts from this area. WCC is very pleased with the progress to date and general discussions with locals from Werris Creek and Quirindi has indicated the same.

The AEMR has been submitted as most would be aware and a copy of this document is circulating through the members of the CCC. The AEMR on site review has been set for the 9th of September 2008. All appropriate government departments have been invited with most likely to be represented during the onsite review process.

Werris Creek Coal has recently lodged a minor modification application to the existing Development Consent with the Department of Planning. The modification requests an increase to the rail load-out stockpile from 20 000t to 100 000t, an increase in public road haulage from 30 000 t/per year to 50 000t/per year and the construction of a 35ML void water dam. It is envisaged that a determination on the modification will be made within the month.

The 8th Community Consultative Committee meeting was held 5th June 2008.

Please feel free to ask any questions in relation to the information contained within this document during item 7 of the meeting agenda.

Sincerely

Lynden Cini